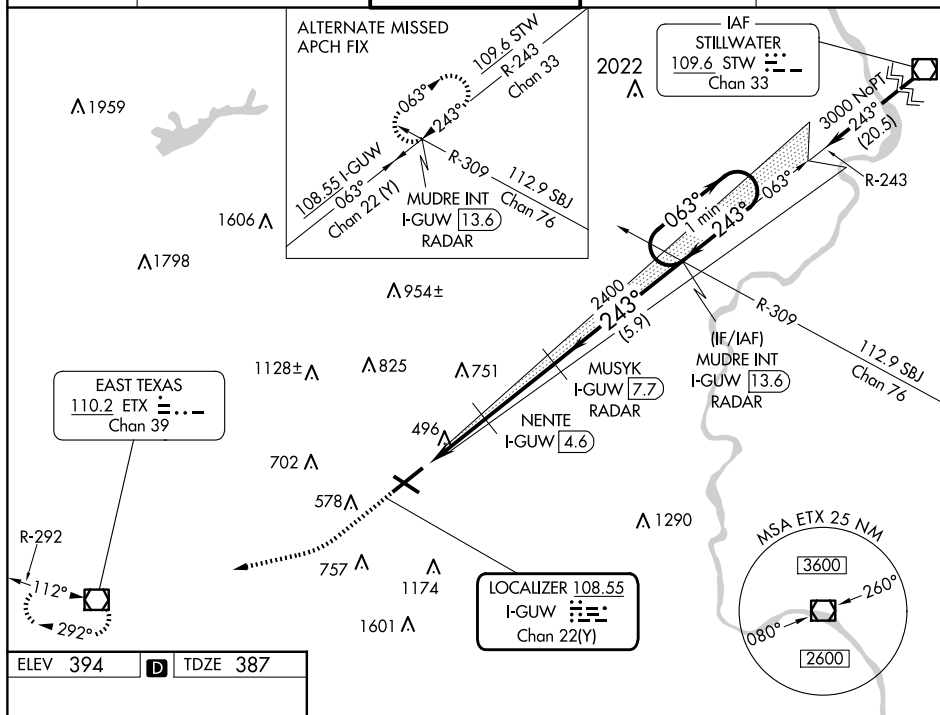


LOC/DME I-GUW <b>108.55</b> Chan <b>22</b> (Y)	APP CRS <b>243°</b>	Rwy Idg <b>7089</b> TDZE <b>387</b> Apt Elev <b>394</b>
--	------------------------	---

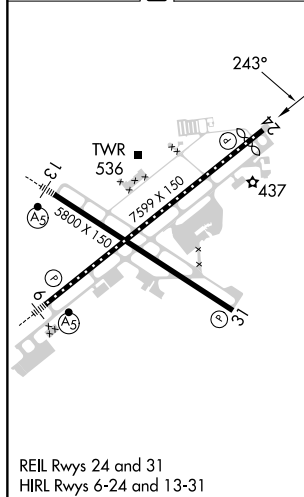
ILS or LOC/DME RWY 24  
LEHIGH VALLEY INTL (ABE)

**MISSED APPROACH:** Climb to 900 then climbing right turn to 3000 direct ETX VOR/DME and hold.

ATIS 126.975	ALLETOWN APP CON 119.65 124.45 351.8	ALLETOWN TOWER 120.5 257.95	GND CON 121.9 257.95	CLNC DEL 124.05 257.95
-----------------	---	--------------------------------	-------------------------	---------------------------



ELEV 394	<b>D</b>	TDZE 387
----------	----------	----------



The diagram illustrates the VGSB ILS glidepath. Key features include:

- Navigation Aids:** ETX, MUSYK I-GUW [7.7], RADAR, MUDRE INT I-GUW [13.6], NENTE I-GUW [4.6], and I-GUW [2.7] are shown along the path.
- Distances:** Distances from the start of the glidepath are 1.1 NM, 1.9 NM, 3.2 NM, and 5.9 NM.
- Angles:** The glidepath angle is 3.00° TCH 55. The angle between the glidepath and the horizontal is 243°. The angle between the horizontal and the glidepath is 063°.
- LOC only:** A note indicating that the Localizer (LOC) is only available for certain frequencies.

CATEGORY	A	B	C	D
S-ILS 24		587/40	200 (200-¾)	
S-LOC 24	800/55	413 (500-1)	800/60	413 (500-1¼)
<b>C</b> CIRCLING	900-1	506 (600-1)	1180-2¼ 786 (800-2¼)	1600-3 1206 (1300-3)

## ILS or LOC/DME RWY 24