

WAAS
CH **48917**
W22A

APP CRS
225°

Rwy Idg
TDZE **1424**
Apt Elev **1425**

RNAV (GPS) RWY 22

ALEXANDRIA RGNL/CHANDLER FLD (AXN)

RNP APCH.

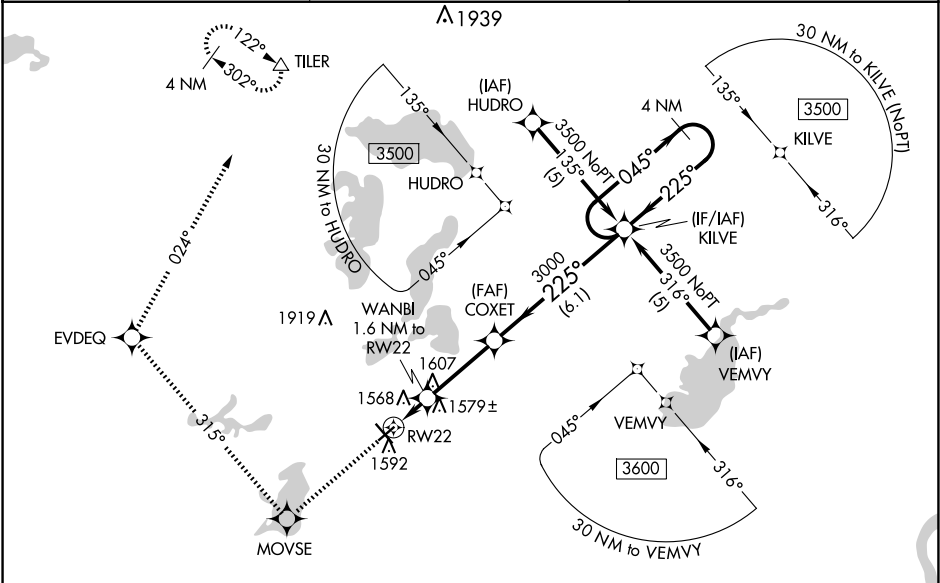
▼

▲

Baro-VNAV NA when using Glenwood altimeter setting. For uncompensated Baro-VNAV systems, LNAV/VNAV NA below -17°C or above 46°C.
When local altimeter setting not received, use Glenwood altimeter setting and increase all DA 37 feet and all MDA 40 feet, increase LNAV/VNAV all Cats and LNAV Cat D visibility ¼ mile. Rwy 22 helicopter visibility reduction below ¾ SM NA.

MISSED APPROACH: Climb to 3500 direct MOVSE and right turn on track 315° to EVDEQ and on track 024° to TILER and hold.

| | | |
|------------------------|--|---------------------------------|
| ASOS 118.375 | MINNEAPOLIS CENTER 126.1 269.2 | UNICOM 123.0 (CTAF) 0 |
|------------------------|--|---------------------------------|



ELEV 1425

TDZE 1424

3500

MOVSE

EVDEQ

tiler

VGSI and RNAV glidepath not coincident (VGSI Angle 3.00/TCH 44).

KILVE

4 NM Holding Pattern

045°

3500

GP 3.00° TCH 50

*LNAV only.

WANBI 1.6 NM to RW22

COXET 3000

1980*

1.6 NM

3.2 NM

6.1 NM

| CATEGORY | A | B | C | D |
|-----------|-----|---------|--------------|----------------------|
| LPV | DA | 1677-1 | 253 (300-1) | |
| LNAV/VNAV | DA | 1880-1½ | 456 (500-1½) | |
| LNAV | MDA | 1840-1 | 416 (500-1) | 1840-1¼ 416 (500-1¼) |

REIL Rwy 4, 13, and 22 0

MIRL Rwy 4-22 and 13-31 0