

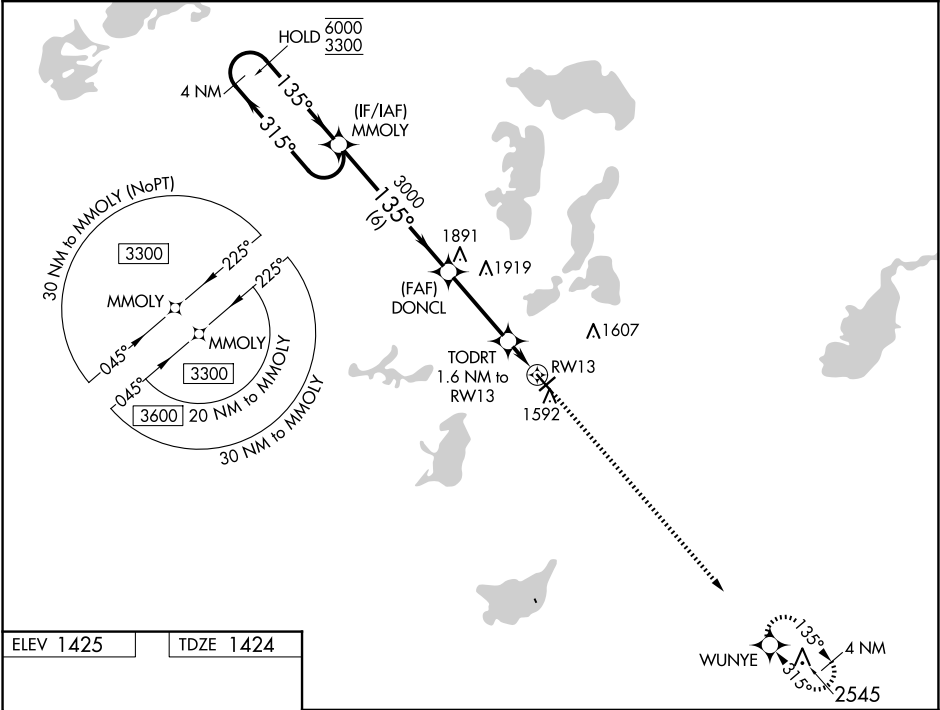
WAAS CH 50245 W13A	APP CRS 135°	Rwy Idg TDZE Apt Elev	5099 1424 1425
--	------------------------	-----------------------------	---

RNAV (GPS) RWY 13

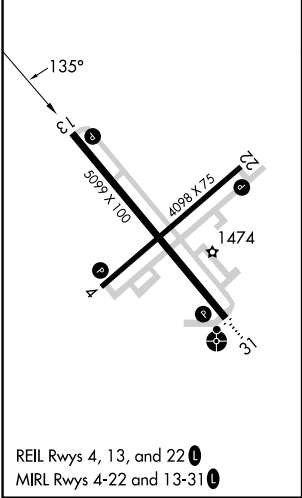
ALEXANDRIA RGNL/CHANDLER FLD (AXN)

RNP APCH - GPS.	MISSED APPROACH: Climb to 3600 direct WUNYE and hold.
For uncompensated Baro-VNAV systems, LNAV/VNAV NA below -24°C or above 54°C.	

ASOS 118.375	MINNEAPOLIS CENTER 126.1 269.2	UNICOM 123.0 (CTAF) 0
------------------------	--	---------------------------------



ELEV 1425	TDZE 1424
-----------	-----------



4 NM Holding Pattern				VGSi and RNAV glidepath not coincident (VGSi Angle 3.00/TCH 34).				3600	WUNYE
6000 ← 315°				3000				↑	
3300				135°				✧	
GP 3.00°				3000				TODRT 1.6 NM to RW13	
TCH 40				1960				RW13	
				6 NM				1.6 NM	
CATEGORY				A	B	C	D		
LPV DA				1674-1 250 (300-1)					
LNAV/VNAV DA				1721-1 297 (300-1)					
LNAV MDA				1800-1 376 (400-1)					
CIRCLING				1900-1 475 (500-1)		1940-1½ 515 (600-1½)		2000-2 575 (600-2)	