

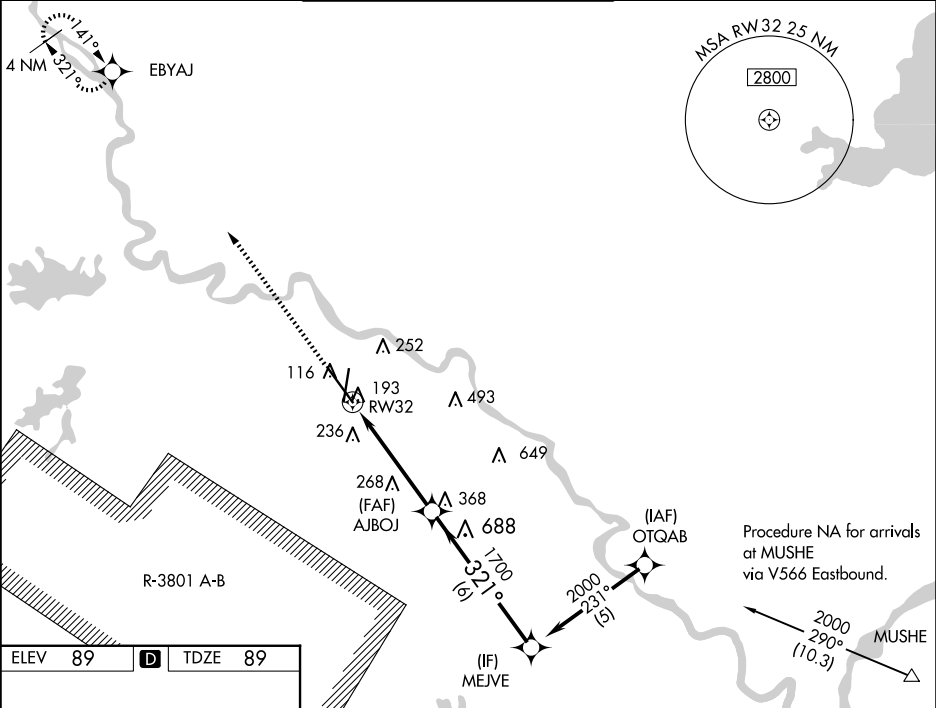
WAAS CH 50110 W32A	APP CRS 321°	Rwy Ldg 9352 TDZE 89 Apt Elev 89
--	------------------------	---

RNAV (GPS) RWY 32

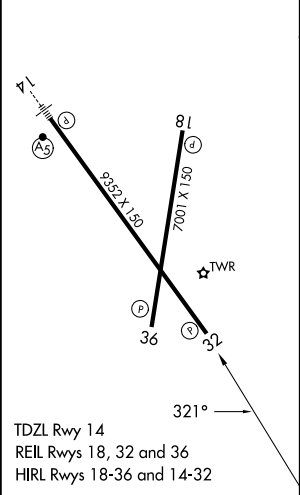
ALEXANDRIA INTL (AEX)


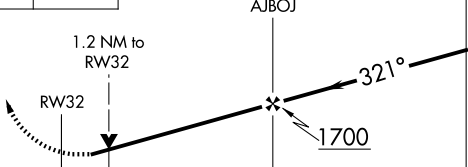
RNP APCH-GPS.	MISSED APPROACH: Climb to 3000 direct EBYAJ WP and hold.
▼ Rwy 32 helicopter visibility reduction below ¾ SM NA. Baro-VNAV NA below -15°C. ▲ When R-3801 A-B active, RADAR required.	

ASOS 123.975	POLK APP CON 125.4 254.8	ALEXANDRIA TOWER 127.35 (CTAF) 269.2	GND CON 121.9 372.0	CLNC DEL 121.9
------------------------	------------------------------------	--	-------------------------------	--------------------------



ELEV 89	D	TDZE 89
----------------	----------	----------------



3000 ↑		EBYAJ 		VGSi and RNAV glidepath not coincident. (VGSi Angle 3.00/TCH 80).		Procedure Turn NA			
		AJBOJ		MEJVE		2000			
1.2 NM		3.6 NM		6 NM		GP 3.00° TCH 55			
CATEGORY		A		B		C		D	
LPV DA				340/50		251 (300-1)			
LNAV/ VNAV DA				460/60		371 (400-1¼)			
LNAV MDA		520/55		431 (500-1)		520-1¼ 431 (500-1¼)		520-1½ 431 (500-1½)	
CIRCLING		540-1 451 (500-1)		560-1 471 (500-1)		700-1¾ 611 (700-1¾)		860-2½ 771 (800-2½)	