

ALEXANDRIA, LOUISIANA

AL-13 (FAA)

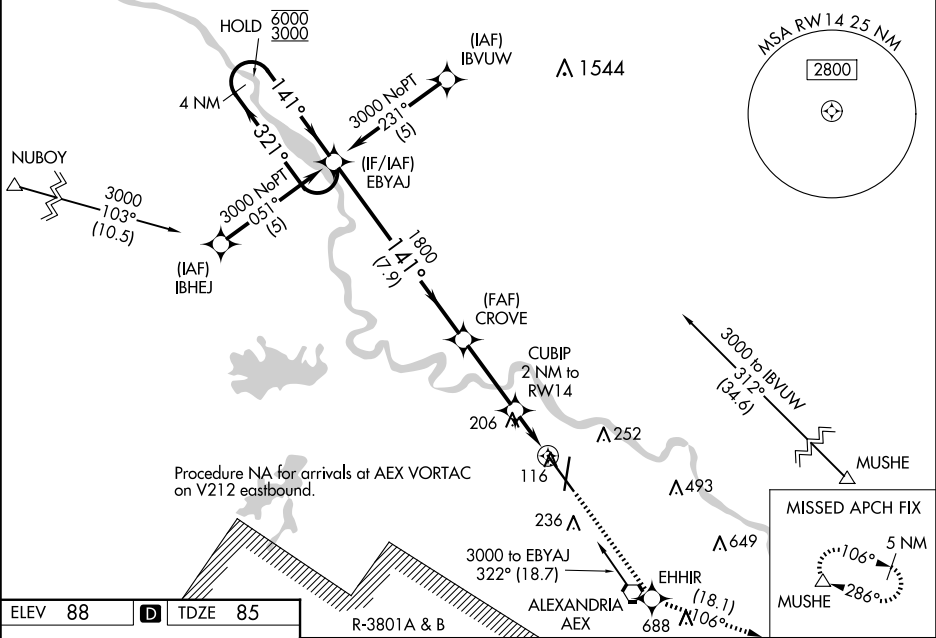
25163

WAAS CH 56417 W14A	APP CRS 141°	Rwy Ldg 9352 TDZE 85 Apt Elev 88
--	------------------------	---

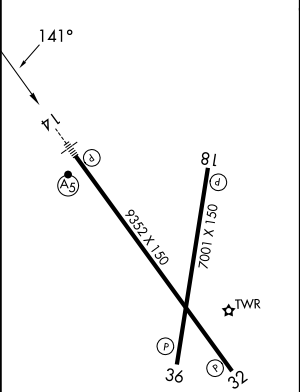
RNAV (GPS) RWY 14
ALEXANDRIA INTL (AEX)

RNP APCH - GPS.	MALSR 	MISSED APPROACH: Climb to 4000 direct EHHIR and on track 106° to MUSHE and hold.
 For uncompensated Baro-VNAV systems, LNAV/VNAV NA below -15°C or above 48°C. For inop ALS increase LNAV Cat D visibility to RVR 6000. RADAR required when R-3801 A-B in use.		

ASOS 123.975	POLK APP CON 125.4 254.8	ALEXANDRIA TOWER 127.35 (CTAF) 269.2	GND CON 121.9 372.0	CLNC DEL 121.9
------------------------	------------------------------------	---	-------------------------------	--------------------------



ELEV 88	D	TDZE 85
----------------	----------	----------------



TDZL Rwy 14
REIL Rwy 18, 32 and 36
HIRL Rwy 18-36 and 14-32

VGSI and RNAV glidepath not coincident (VGSI Angle 3.00/TCH 71).				
Holding Pattern EBYAJ				
GP 3.00° TCH 56				
CATEGORY A B C D				
LPV DA 346/24 261 (300-1/2)				
LNAV/VNAV DA 488/50 403 (400-1)				
LNAV MDA 480/24 395 (400-1/2) 480/50 395 (400-1)				
CIRCLING 540-1 452 (500-1) 560-1 472 (500-1) 700-1 612 (700-1 3/4) 860-2 772 (800-2 1/2)				

ALEXANDRIA, LOUISIANA
Amdt 1C 11AUG22

31°20'N-92°33'W

ALEXANDRIA INTL (AEX)
RNAV (GPS) RWY 14

SC-4, 10 JUL 2025 to 07 AUG 2025

SC-4, 10 JUL 2025 to 07 AUG 2025