

VORTAC ABQ	APP CRS	Rwy Ldg	12793
113.2	077°	TDZE	5320
Chan 79		Apt Elev	5355

VOR RWY 8  
ALBUQUERQUE INTL SUNPORT (ABQ)

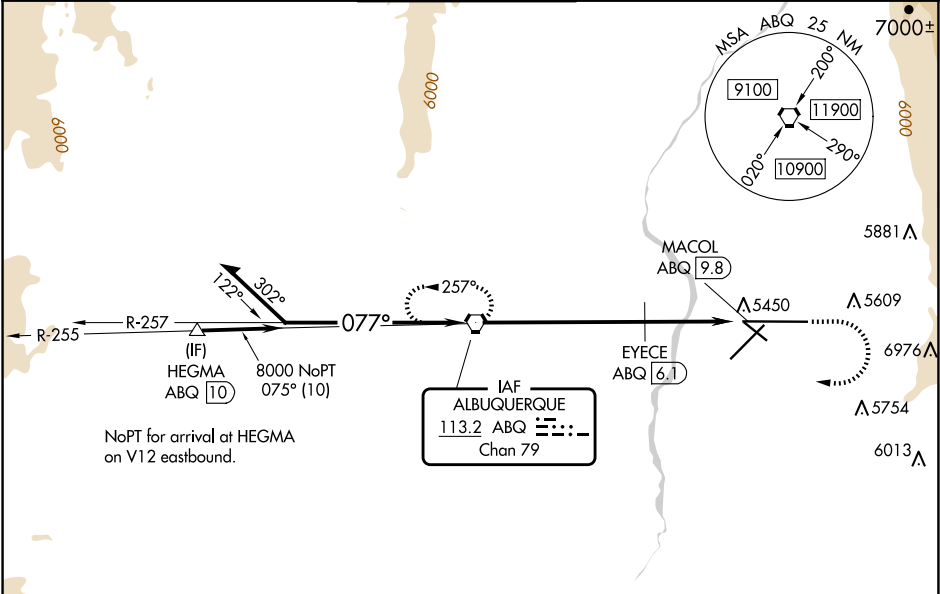
**⚠** EYECE FIX MINIMUMS: For inop ALS, increase S-8 Cat C/D/E visibility to RVR 5500.  
**ASR** For inop ALS, increase S-8 Cat E visibility to 3 SM.  
Circling Cat E NA southeast of Rwy 3-21 and northeast of Rwy 12-30.

**MALSR**

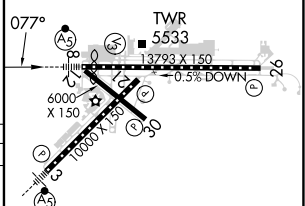
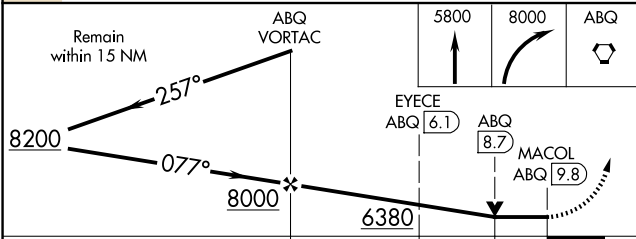


MISSED APPROACH: Climb to 5800 then climbing right turn to 8000 direct ABQ VORTAC and hold.

D-ATIS	ALBUQUERQUE APP CON	ALBUQUERQUE TOWER	GND CON	CLNC DEL	CPDLC
118.0 257.7	123.9 354.1	120.3 351.9	121.9 348.6	119.2 259.3	



ELEV 5355 **D** TDZE 5320



MIRL Rwy 12-30  
TDZ/CL Rwys 3 and 8  
HIRL Rwys 3-21 and 8-26  
REIL Rwys 21, 26, and 30

FAF to MAP 9.8 NM

	Knots	60	90	120	150	180
Min:Sec	9:48	6:32	4:54	3:55	3:16	

CATEGORY	A	B	C	D	E
S-8	6380/40 1060 (1100-¾)	6380/55 1060 (1100-1)	6380-2½	1060 (1100-2½)	
CIRCLING <b>C</b>	6380-1¼ 1025 (1100-¼)	6380-1½ 1025 (1100-½)	6380-3 1025 (1100-3)	6460-3 1105 (1200-3)	7460-3 2105 (2200-3)
EYECE FIX MINIMUMS					
S-8	5700/24	380 (400-½)	5700/40	380 (400-¾)	
CIRCLING <b>C</b>	5840-1 485 (500-1)	5920-1 565 (600-1)	5940-1½ 585 (600-1½)	6460-3 1105 (1200-3)	7460-3 2105 (2200-3)

SW-1, 10 JUL 2025 to 07 AUG 2025

SW-1, 10 JUL 2025 to 07 AUG 2025