

APP CRS
079°

Rwy Ldg
TDZE
Apt Elev

12793
5320
5355

RNAV (RNP) Z RWY 8
ALBUQUERQUE INTL SUNPORT (ABQ)

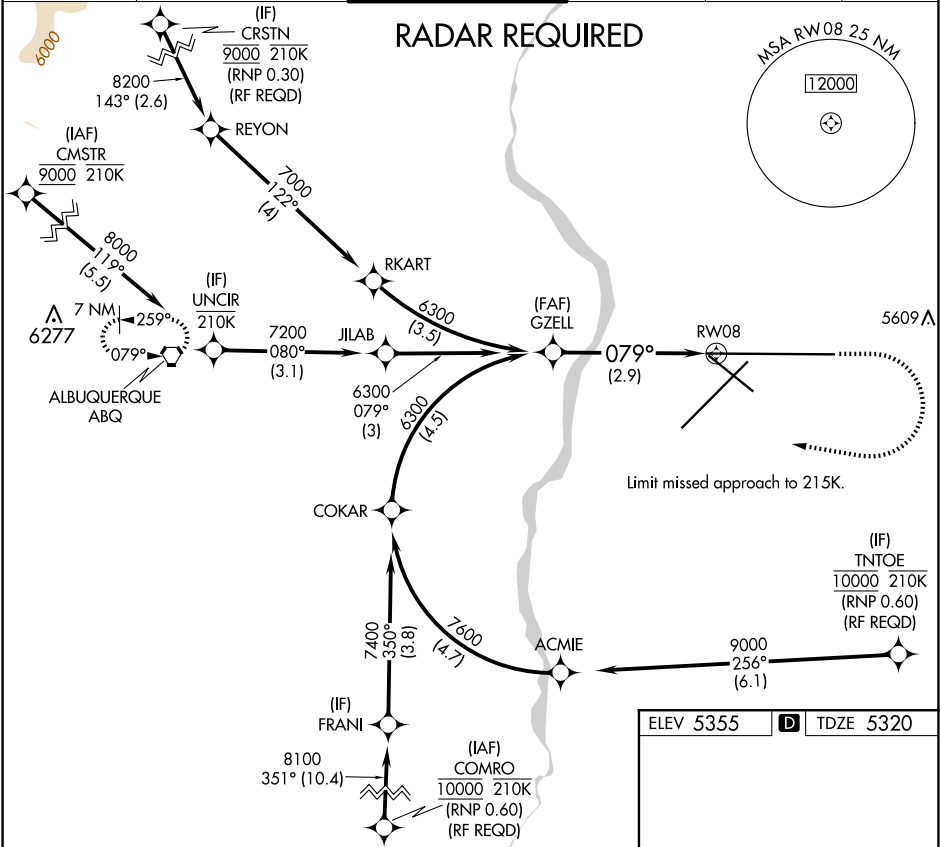
ASR

For uncompensated Baro-VNAV systems, procedure NA below -12°C (11°F) or above 47°C (117°F). For inop MALSR, increase RNP 0.30 all Cats visibility to RVR 4700. GPS required.

MALSR

MISSED APPROACH: Climb to 5900 then climbing right turn to 8000 direct ABQ VORTAC and hold.

D-ATIS 118.0 257.7	ALBUQUERQUE APP CON 123.9 354.1	ALBUQUERQUE TOWER 120.3 351.9	GND CON 121.9 348.6	CLNC DEL 119.2 259.3	CPDLC
-----------------------	------------------------------------	----------------------------------	------------------------	-------------------------	-------



GZELL

VGSI and RNAV glidepath not coincident (VGSI Angle 2.95/TCH 55).

5900

8000

ABQ

6300

GP 3.00°

TCH 54

079°

RW08

See planview for multiple IF locations.

2.9 NM

CATEGORY

A

B

C

D

RNP 0.30 DA

5619/24

299 (300-½)

AUTHORIZATION REQUIRED

ELEV 5355

TDZE 5320

GP 3.00°

TCH 54

079°

AS

6000 X 150

10000 X 150

13793 X 150

5533

0.5% DOWN

MIRL Rwy 12-30

TDZ/CL Rws 3 and 8

HIRL Rws 3-21 and 8-26

REIL Rws 21, 26, and 30