

APP CRS  
**259°**

Rwy Ldg  
TDZE  
**5355**

Apt Elev  
**5355**

**RNAV (RNP) Z RWY 26**

ALBUQUERQUE INTL SUNPORT (ABQ)

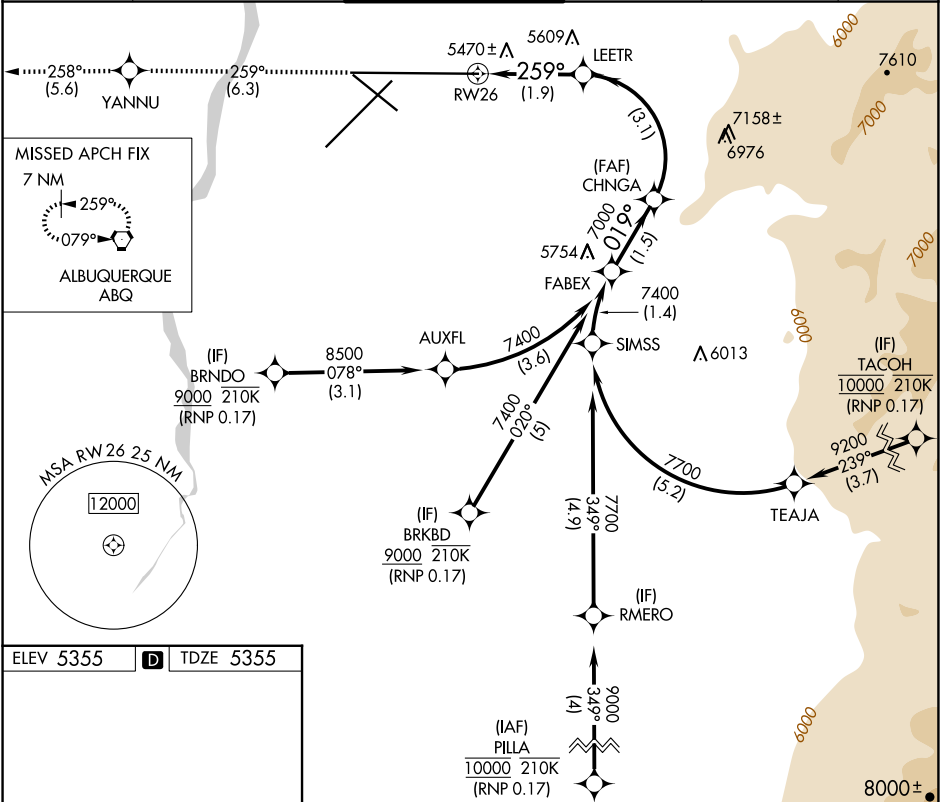
RNP AR APCH, RF required.

▼

For uncompensated Baro-VNAV systems, procedure NA ASR below -13°C or above 48°C.

MISSED APPROACH: Climb to 8000 on track 259° to YANNU and on track 258° to ABQ VORTAC and hold.

D-ATIS <b>118.0 257.7</b>	ALBUQUERQUE APP CON <b>123.9 354.1</b>	ALBUQUERQUE TOWER <b>120.3 351.9</b>	GND CON <b>121.9 348.6</b>	CLNC DEL <b>119.2 259.3</b>	CPDLC
------------------------------	---	---	-------------------------------	--------------------------------	-------



ELEV 5355

**D**

TDZE 5355

TWR  
5533

13793 X 150

0.5% DOWN

6000 X 150

10000 X 150

MIRL Rwy 12-30

TDZ/CL Rlys 3 and 8

HIRL Rlys 3-21 and 8-26

REIL Rlys 21, 26, and 30

8000

YANNU

tr 259°

ABQ

tr 258°

VGSI and RNAV glidepath not coincident (VGSI Angle 3.00/TCH 83).

FABEX

CHNGA

7000

019°

7400

7000

GP 3.00°

TCH 50

See planview for multiple IF locations.

LEETR

6007

259°

RW26

1.9 NM

3.1 NM

1.5 NM

CATEGORY	A	B	C	D
RNP 0.17 DA	5745-1¼ 390 (400-1¼)			

**AUTHORIZATION REQUIRED**