

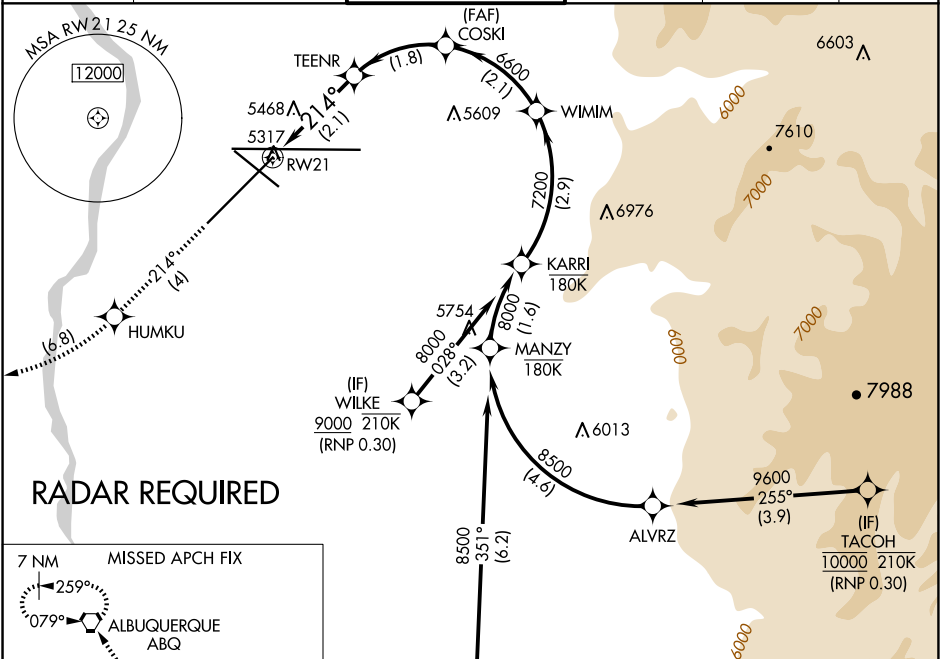
APP CRS	Rwy Ldg	10000
214°	TDZE	5316
	Apt Elev	5355

RNAV (RNP) Z RWY 21

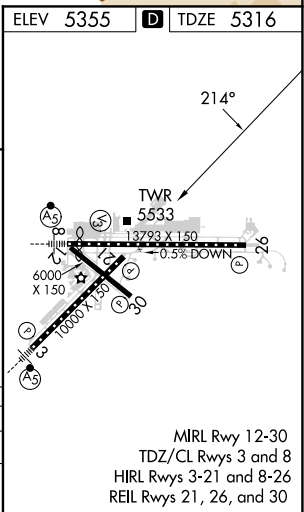
ALBUQUERQUE INTL SUNPORT (ABQ)

ASR	For uncompensated Baro-VNAV systems, procedure NA below -12°C (11°F) or above 47°C (116°F). RF required. GPS required.	MISSED APPROACH: Climb to 8000 on track 214° to HUMKU, right turn to WAPMA, then on track 315° to ABQ VORTAC and hold.
-----	--	--

D-ATIS	ALBUQUERQUE APP CON	ALBUQUERQUE TOWER	GND CON	CLNC DEL	CPDLC
118.0 257.7	123.9 354.1	120.3 351.9	121.9 348.6	119.2 259.3	



 (not to scale)				 (IF) RMERO (IAF) PILLA 9000 349° (4) 10000 210K (RNP 0.30)	
8000 ↑ tr 214°	HUMKU 	WAPMA 	tr 315° 	ABQ 	See planview for multiple IF locations.
VGSI and RNAV glidepath not coincident (VGSI Angle 3.00/TCH 74).					KARRI
					8000 <u>7200</u> <u>6600</u> GP 3.00° TCH 55
CATEGORY	A	B	C	D	
RNP 0.30 DA	5755-1½ 439 (400-1½)				
AUTHORIZATION REQUIRED					



SW-1, 10 JUL 2025 to 07 AUG 2025

SW-1, 10 JUL 2025 to 07 AUG 2025