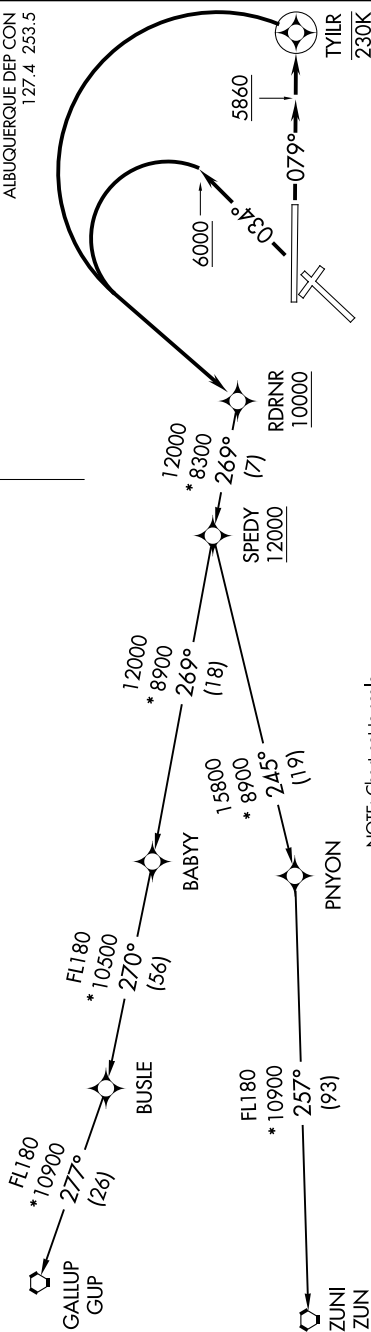


TAKEOFF MINIMUMS

Rwy 3: Standard with minimum climb of 500' per NM to 10900.
Rwy 8: Standard with minimum climb of 500' per NM to 10200.

TOP ALTITUDE:

118.0	257.7	CINCL DEL
119.2	259.3	GND CON
		CPDLC
	121.9	348.6
		ALBUQUERQUE TOWER
	120.3	351.9
		ALBUQUERQUE DEP CON
	127.4	253.5



NOTE: Chart not to scale.

DEPARTURE ROUTE DESCRIPTION

TAKEOFF RUNWAY 3: Climb heading 034° to 6000, then left turn direct RDRNR, cross RDRNR at or above 10000, thence

TAKEOFF RUNWAY 8: Climb heading 079° to 5860, and direct TYLR, then left turn direct RDRNR, cross RDRNR at or above 10000, thence . . .

... (transition). Maintain FL200. Expect filed altitude ten minutes after departure.

GALLUP TRANSITION (RDRNR3.GUP)

ZUNI TRANSITION (RDRNR3.ZUN)

NOTE: Rwy 8, do not exceed 230K until passing TYLR.

NOTE: RADAR required.

NOTE: DME/DME/IRU or GPS required.

NOTE: RNAV 1.

NOTE: For Turbojet aircraft only.

NOTE: If unable to accept climb gradient, advise ATC on initial contact.

NOTE: For non-GPS equipped aircraft, ABQ and ONM DME's must be operational.

RDRNR THREE DEPARTURE (RNAV)
(RDRNR3.RDRNR) 25JUN15

ALBUQUERQUE, NEW MEXICO
ALBUQUERQUE INTL SUNPORT (ABQ)