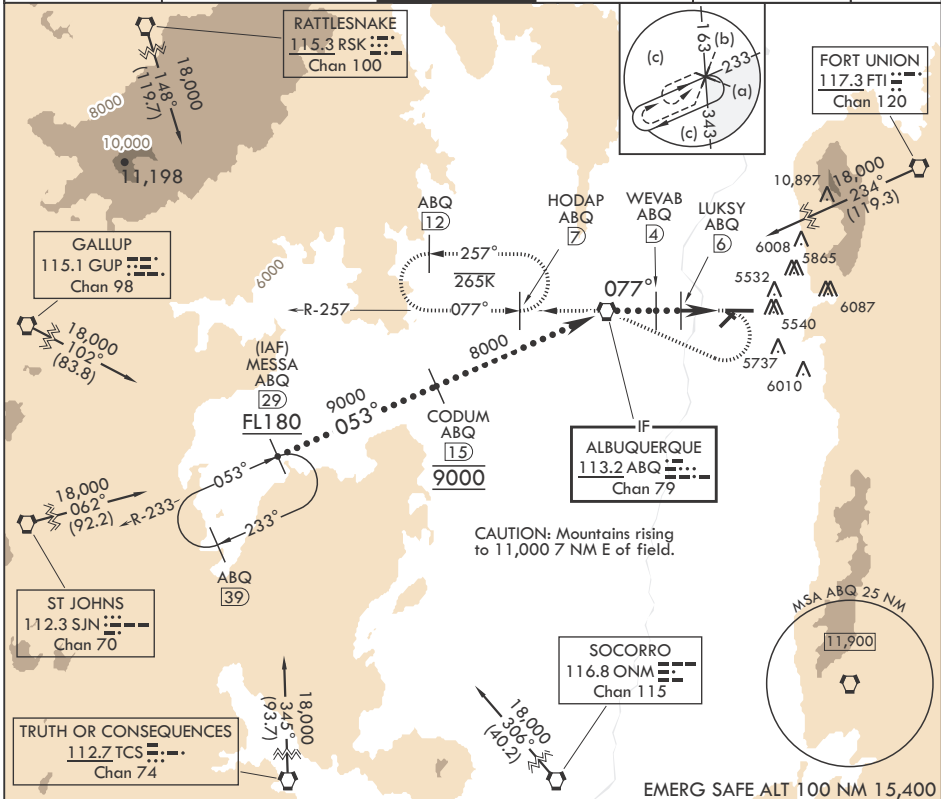


VORTAC ABQ 113.2 Chan 79	APCH CRS 077°	Rwy Idg 12,793 TDZE 5320 Arprt Elev 5355	- (USAF) ALBUQUERQUE INTL SUNPORT (KIRTLAND AFB) (KABQ)
--------------------------------	------------------	---	--

<p>⚠ * When ALS inop, increase CAT CDE RVR to 55, vis to 1 1/8 miles. ** Circling NA for CAT E SE of Rwy 3-21 and NE of Rwy 12-30. When local altimeter is not received, procedure NA.</p>	<p>MALSR ⚠</p> <p>MISSED APPROACH: Climb to 5800 then climbing right turn to 8000 direct ABQ VORTAC R-257 to HODAP/ABQ 7 DME and hold.</p>
--	--

D-ATIS 118.0 257.7	APP CON/DEP CON 123.9 253.5	TOWER 120.3 351.9	GND CON 121.9 348.6	CLNC DEL 119.2 259.3	ASR
-----------------------	--------------------------------	----------------------	------------------------	-------------------------	-----



MESSA

ABQ 29

FL180

053°

CODUM

15

VORTAC

8000

WEVAB

4

LUKSY

6

EYECO

9

3.08°

TCH 54

3 NM

0.8

5800

8000

ABQ

ELEV 5355

TDZE 5320

Rwy 8 Idg 12,793'

FL 180

053°

9000

CODUM 15

VORTAC

8000

077°

WEVAB 4

6800

LUKSY 6

6600

EYECO 9

3.08°

TCH 54

3 NM

0.8

5800

8000

ABQ

ELEV 5355

TDZE 5320

Rwy 8 Idg 12,793'

077°

13,793 x 150

0.3% UP

5458

5354

HIRL Rws 3-21, 8-26

MIRL Rwy 12-30

REIL Rws 21, 26, 30

TDZL/CL Rws 3, 8

FL 180

053°

CODUM

15

VORTAC

8000

WEVAB

4

LUKSY

6

EYECO

9

3.08°

TCH 54

3 NM

0.8

5800

8000

ABQ

ELEV 5355

TDZE 5320

Rwy 8 Idg 12,793'

FL 180

053°

9000

CODUM 15

VORTAC

8000

077°

WEVAB 4

6800

LUKSY 6

6600

EYECO 9

3.08°

TCH 54

3 NM

0.8

5800

8000

ABQ

ELEV 5355

TDZE 5320

Rwy 8 Idg 12,793'

077°

13,793 x 150

0.3% UP

5458

5354

HIRL Rws 3-21, 8-26

MIRL Rwy 12-30

REIL Rws 21, 26, 30

TDZL/CL Rws 3, 8

FL 180

053°

CODUM

15

VORTAC

8000

WEVAB

4

LUKSY

6

EYECO

9

3.08°

TCH 54

3 NM

0.8

5800

8000

ABQ

ELEV 5355

TDZE 5320

Rwy 8 Idg 12,793'

FL 180

053°

9000

CODUM 15

VORTAC

8000

077°

WEVAB 4

6800

LUKSY 6

6600

EYECO 9

3.08°

TCH 54

3 NM

0.8

5800

8000

ABQ

ELEV 5355

TDZE 5320

Rwy 8 Idg 12,793'

077°

13,793 x 150

0.3% UP

5458

5354

HIRL Rws 3-21, 8-26

MIRL Rwy 12-30

REIL Rws 21, 26, 30

TDZL/CL Rws 3, 8

FL 180

053°

CODUM

15

VORTAC

8000

WEVAB

4

LUKSY

6

EYECO

9

3.08°

TCH 54

3 NM

0.8

5800

8000

ABQ

ELEV 5355

TDZE 5320

Rwy 8 Idg 12,793'

FL 180

053°

9000

CODUM 15

VORTAC

8000

077°

WEVAB 4

6800

LUKSY 6

6600

EYECO 9

3.08°

TCH 54

3 NM

0.8

5800

8000

ABQ

ELEV 5355

TDZE 5320

Rwy 8 Idg 12,793'

077°

13,793 x 150

0.3% UP

5458

5354

HIRL Rws 3-21, 8-26

MIRL Rwy 12-30

REIL Rws 21, 26, 30

TDZL/CL Rws 3, 8

FL 180

053°

CODUM

15

VORTAC

8000

WEVAB

4

LUKSY

6

EYECO

9

3.08°

TCH 54

3 NM

0.8

5800

8000

ABQ

ELEV 5355

TDZE 5320

Rwy 8 Idg 12,793'

FL 180

053°

9000

CODUM 15

VORTAC

8000

077°

WEVAB 4

6800

LUKSY 6

6600

EYECO 9

3.08°

TCH 54

3 NM

0.8

5800

8000

ABQ

ELEV 5355

TDZE 5320

Rwy 8 Idg 12,793'

077°

13,793 x 150

0.3% UP

5458

5354

HIRL Rws 3-21, 8-26

MIRL Rwy 12-30

REIL Rws 21, 26, 30

TDZL/CL Rws 3, 8

FL 180

053°

CODUM

15

VORTAC

8000

WEVAB

4

LUKSY

6

EYECO

9

3.08°

TCH 54

3 NM

0.8

5800

8000

ABQ

ELEV 5355

TDZE 5320

Rwy 8 Idg 12,793'

FL 180

053°

9000

CODUM 15

VORTAC

8000

077°

WEVAB 4

6800

LUKSY 6

6600

EYECO 9

3.08°

TCH 54

3 NM

0.8

5800

8000

ABQ

ELEV 5355

TDZE 5320

Rwy 8 Idg 12,793'

077°

13,793 x 150

0.3% UP

5458

5354

HIRL Rws 3-21, 8-26

MIRL Rwy 12-30

REIL Rws 21, 26, 30

TDZL/CL Rws 3, 8

FL 180

053°

CODUM

15

VORTAC

8000

WEVAB

4

LUKSY

6

EYECO

9

3.08°

TCH 54

3 NM

0.8

5800

8000

ABQ

ELEV 5355

TDZE 5320

Rwy 8 Idg 12,793'

FL 180

053°

9000

CODUM 15

VORTAC

8000

077°

WEVAB 4

6800

LUKSY 6

6600

EYECO 9

3.08°

TCH 54

3 NM

0.8

5800

8000

ABQ

ELEV 5355

TDZE 5320

Rwy 8 Idg 12,793'

077°

13,793 x 150

0.3% UP

5458

5354

HIRL Rws 3-21, 8-26

MIRL Rwy 12-30

REIL Rws 21, 26, 30

TDZL/CL Rws 3, 8

FL 180

053°

CODUM

15

VORTAC

8000

WEVAB

4

LUKSY

6

EYECO

9

3.08°

TCH 54

3 NM

0.8

5800

8000

ABQ

ELEV 5355

TDZE 5320

Rwy 8 Idg 12,793'

FL 180

053°

9000

CODUM 15

VORTAC

8000

077°

WEVAB 4

6800

LUKSY 6

6600

EYECO 9

3.08°

TCH 54

3 NM

0.8

5800

8000

ABQ

ELEV 5355

TDZE 5320

Rwy 8 Idg 12,793'

077°

13,793 x 150

0.3% UP

5458

5354

HIRL Rws 3-21, 8-26

MIRL Rwy 12-30

REIL Rws 21, 26, 30

TDZL/CL Rws 3, 8

FL 180

053°

CODUM

15

VORTAC

8000

WEVAB

4

LUKSY

6

EYECO

9

3.08°

TCH 54

3 NM

0.8

5800

8000

ABQ

ELEV 5355

TDZE 5320

Rwy 8 Idg 12,793'

FL 180

053°

9000

CODUM 15

VORTAC

8000

077°

WEVAB 4

6800

LUKSY 6

6600

EYECO 9

3.08°

TCH 54

3 NM

0.8

5800

8000

ABQ

ELEV 5355

TDZE 5320

Rwy 8 Idg 12,793'

077°

13,793 x 150

0.3% UP

5458

5354

HIRL Rws 3-21, 8-26

MIRL Rwy 12-30

REIL Rws 21, 26, 30

TDZL/CL Rws 3, 8

FL 180

053°

CODUM

15

VORTAC

8000

WEVAB

4

LUKSY

6

EYECO

9

3.08°

TCH 54

3 NM

0.8

5800

8000

ABQ

ELEV 5355

TDZE 5320

Rwy 8 Idg 12,793'

FL 180

053°

9000

CODUM 15

VORTAC

8000

077°

WEVAB 4

6800

LUKSY 6

6600

EYECO 9

3.08°

TCH 54

3 NM

0.8

5800

8000

ABQ

ELEV 5355

TDZE 5320

Rwy 8 Idg 12,793'

077°

13,793 x 150

0.3% UP

5458

5354

HIRL Rws 3-21, 8-26

MIRL Rwy 12-30

REIL Rws 21, 26, 30

TDZL/CL Rws 3, 8

FL 180

053°

CODUM

15

VORTAC

8000

WEVAB

4

LUKSY

6

EYECO

9

3.08°

TCH 54

3 NM

0.8

5800

8000

ABQ

ELEV 5355

TDZE 5320

Rwy 8 Idg 12,793'

FL 180

053°

9000

CODUM 15

VORTAC

8000

077°

WEVAB 4

6800

LUKSY 6

6600

EYECO 9

3.08°

TCH 54

3 NM

0.8

5800

8000

ABQ

ELEV 5355

TDZE 5320

Rwy 8 Idg 12,793'

077°

13,793 x 150

0.3% UP

5458

5354

HIRL Rws 3-21, 8-26

MIRL Rwy 12-30

REIL Rws 21, 26, 30

TDZL/CL Rws 3, 8

FL 180

053°

CODUM

15

VORTAC

8000

WEVAB

4

LUKSY

6

EYECO

9

3.08°

TCH 54

3 NM

0.8

5800

8000

ABQ

ELEV 5355

TDZE 5320

Rwy 8 Idg 12,793'

FL 180

053°

9000

CODUM 15

VORTAC

8000

077°

WEVAB 4

6800

LUKSY 6

6600

EYECO 9

3.08°

TCH 54

3 NM

0.8

5800

8000

ABQ

ELEV 5355

TDZE 5320

Rwy 8 Idg 12,793'

077°

13,793 x 150

0.3% UP

5458

5354

HIRL Rws 3-21, 8-26

MIRL Rwy 12-30

REIL Rws 21, 26, 30

TDZL/CL Rws 3, 8

FL 180

053°

CODUM

15

VORTAC

8000

WEVAB

4

LUKSY

6

EYECO

9

3.08°

TCH 54

3 NM

0.8

5800

8000

ABQ

ELEV 5355

TDZE 5320

Rwy 8 Idg 12,793'

FL 180

053°

9000

CODUM 15

VORTAC

8000

077°

WEVAB 4

6800

LUKSY 6

6600

EYECO 9

3.08°

TCH 54

3 NM

0.8

5800

8000

ABQ

ELEV 5355

TDZE 5320

Rwy 8 Idg 12,793'

077°

13,793 x 150

0.3% UP

5458

5354

HIRL Rws 3-21, 8-26

MIRL Rwy 12-30

REIL Rws 21, 26, 30

TDZL/CL Rws 3, 8

FL 180

053°

CODUM

15

VORTAC

8000

WEVAB

4

LUKSY

6

EYECO

9

3.08°

TCH 54

3 NM

0.8

5800

8000

ABQ

ELEV 5355

TDZE 5320

Rwy 8 Idg 12,793'

FL 180

053°

9000

CODUM 15

VORTAC

8000

077°

WEVAB 4

6800

LUKSY 6

6600

EYECO 9

3.08°

TCH 54

3 NM

0.8

5800

8000

ABQ

ELEV 5355

TDZE 5320

Rwy 8 Idg 12,793'

077°

13,793 x 150

0.3% UP

5458

5354

HIRL Rws 3-21, 8-26

MIRL Rwy 12-30

REIL Rws 21, 26, 30

TDZL/CL Rws 3, 8

FL 180

053°

CODUM

15

VORTAC

8000

WEVAB

4

LUKSY

6

EYECO

9

3.08°

TCH 54

3 NM

0.8

5800

8000

ABQ

ELEV 5355

TDZE 5320

Rwy 8 Idg 12,793'

FL 180

053°

9000

CODUM 15

VORTAC

8000

077°

WEVAB 4

6800

LUKSY 6

6600

EYECO 9

3.08°

TCH 54

3 NM

0.8

5800

8000

ABQ

ELEV 5355

TDZE 5320

Rwy 8 Idg 12,793'

077°

13,793 x 150

0.3% UP

5458

5354

HIRL Rws 3-21, 8-26

MIRL Rwy 12-30

REIL Rws 21, 26, 30

TDZL/CL Rws 3, 8

FL 180

053°

CODUM

15

VORTAC

8000

WEVAB

4

LUKSY

6

EYECO

9

3.08°

TCH 54

3 NM

0.8

5800

8000

ABQ

ELEV 5355

TDZE 5320

Rwy 8 Idg 12,793'

FL 180

053°

9000

CODUM 15

VORTAC

8000

077°

WEVAB 4

6800

LUKSY 6

6600

EYECO 9

3.08°

TCH 54

3 NM

0.8

5800

8000

ABQ

ELEV 5355

TDZE 5320

Rwy 8 Idg 12,793'

077°

13,793 x 150

0.3% UP

5458

5354

HIRL Rws 3-21, 8-26

MIRL Rwy 12-30

REIL Rws 21, 26, 30

TDZL/CL Rws 3, 8

FL 180

053°

CODUM

15

VORTAC

8000

WEVAB

4

LUKSY

6

EYECO

9

3.08°

TCH 54

3 NM

0.8

5800

8000

ABQ

ELEV 5355

TDZE 5320

Rwy 8 Idg 12,793'

FL 180

053°

9000

CODUM 15

VORTAC

8000

077°

WEVAB 4

6800

LUKSY 6

6600

EYECO 9

3.08°

TCH 54

3 NM

0.8

5800

8000

ABQ

ELEV 5355

TDZE 5320

Rwy 8 Idg 12,793'

077°

13,793 x 150

0.3% UP

5458

5354

HIRL Rws 3-21, 8-26

MIRL Rwy 12-30

REIL Rws 21, 26, 30

TDZL/CL Rws 3, 8

FL 180

053°

CODUM

15

VORTAC

8000

WEVAB

4

LUKSY

6

EYECO

9

3.08°

TCH 54

3 NM

0.8

5800

8000

ABQ

ELEV 5355

TDZE 5320

Rwy 8 Idg 12,793'

FL 180

053°

9000

CODUM 15

VORTAC

8000

077°

WEVAB 4

6800

LUKSY 6

6600

EYECO 9

3.08°

TCH 54

3 NM

0.8

5800

8000

ABQ

</