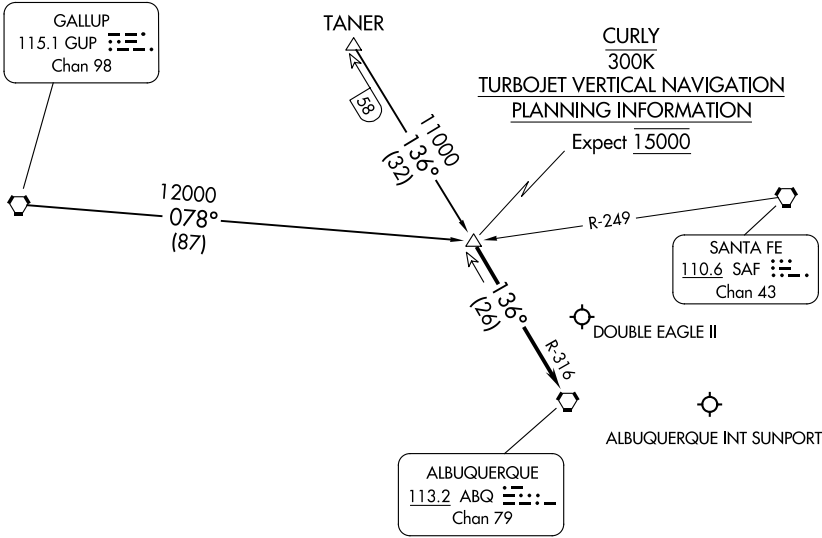


CURLY THREE ARRIVAL

AL-12 (FAA)

ALBUQUERQUE, NEW MEXICO

ALBUQUERQUE APP CON
127.4 253.5
ABQ D-ATIS
118.0 257.7
AEG ATIS
119.025



NOTE: Chart not to scale.

ARRIVAL ROUTE DESCRIPTION

GALLUP TRANSITION (GUP.CURLY3): From over GUP VORTAC on GUP R-078 to CURLY. Thence. . .

TANER TRANSITION (TANER.CURLY3): From over TANER on ABQ R-316 to CURLY. Thence. . .

. . . From over CURLY on ABQ R-316 to ABQ VORTAC. Expect vectors to final approach course after passing CURLY.

CURLY THREE ARRIVAL

ALBUQUERQUE, NEW MEXICO

SW-1, 10 JUL 2025 to 07 AUG 2025

SW-1, 10 JUL 2025 to 07 AUG 2025