

SW-1, 10 JUL 2025 to 07 AUG 2025

ALBUQUERQUE APP CON

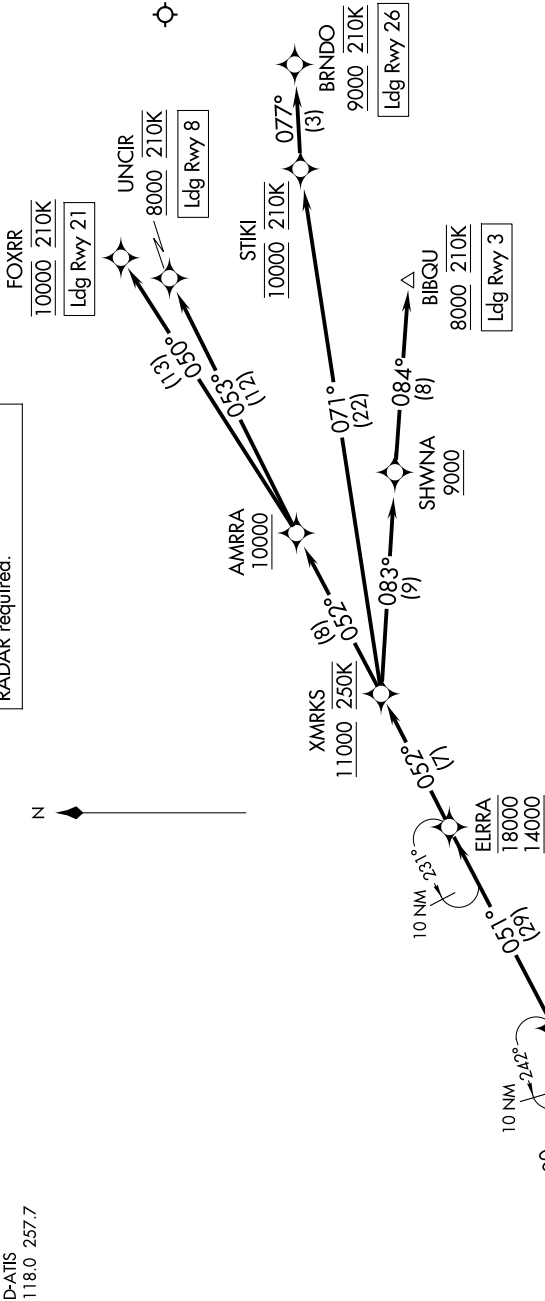
123.9 354.1

D-ATIS

118.0 257.7

RNAV 1-DME/DME/IRU or GPS

RADAR required.



NOTE: Turboprop aircraft only.

NOTE: KALSE transition: For non-GPS equipped aircraft, ABQ DME must be operational.

NOTE: TMALE transition: For non-GPS equipped aircraft, ABQ DME must be operational.

NOTE: Landing Rwy 3, expect RADAR vectors prior to BIBQU.

NOTE: Landing Rwy 8, expect RADAR vectors prior to UNCIR.

NOTE: Landing Rwy 21, expect RADAR vectors prior to FOXR.

NOTE: Landing Rwy 26, expect RADAR vectors prior to BRNDO.

NOTE: Chart not to scale.

SW-1, 10 JUL 2025 to 07 AUG 2025

(NARRATIVE ON FOLLOWING PAGE)