

APP CRS  
**011°**

Rwy Idg  
TDZE  
Apt Elev

**8500**  
**284**  
**285**

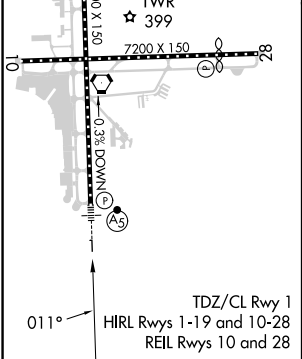
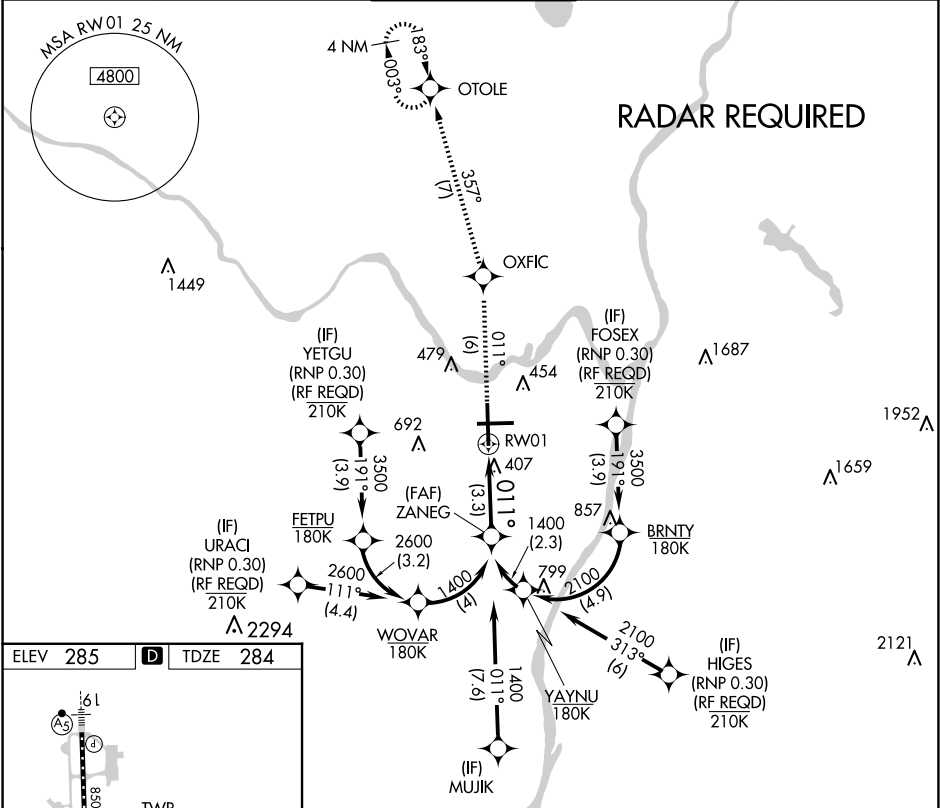
**RNAV (RNP) Z RWY 1**  
ALBANY INTL (ALB)

**GPS required.** For uncompensated Baro-VNAV systems, procedure N/A below -15°C (3°F) or above 47°C (117°F). For inoperative MALSR, increase RNP 0.15 visibility to 1½ and RNP 0.30 visibility to 1½.

**MALSR**

**MISSED APPROACH:** Climb to 3000 on track 011° to OXFIC and on track 357° to OTOLE and hold.

D-ATIS <b>120.45</b>	ALBANY APP CON <b>132.825 307.2</b>	ALBANY TOWER <b>119.5 257.8</b>	GND CON <b>121.7 348.6</b>	CLNC DEL <b>127.50</b>
-------------------------	--	------------------------------------	-------------------------------	---------------------------



3000

↑

tr 011°

OXFIC

tr 357°

OTOLE

ZANEG

1400

See planview for multiple IF locations.

**GP 3.00°**  
**TCH 56'**

CATEGORY	A	B	C	D
RNP 0.15 DA		656/40	372 (400-¾)	
RNP 0.30 DA		727/50	443 (500-1)	

**AUTHORIZATION REQUIRED**