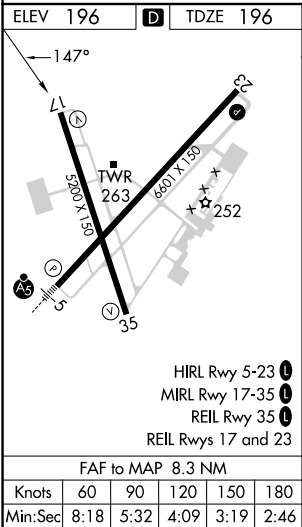
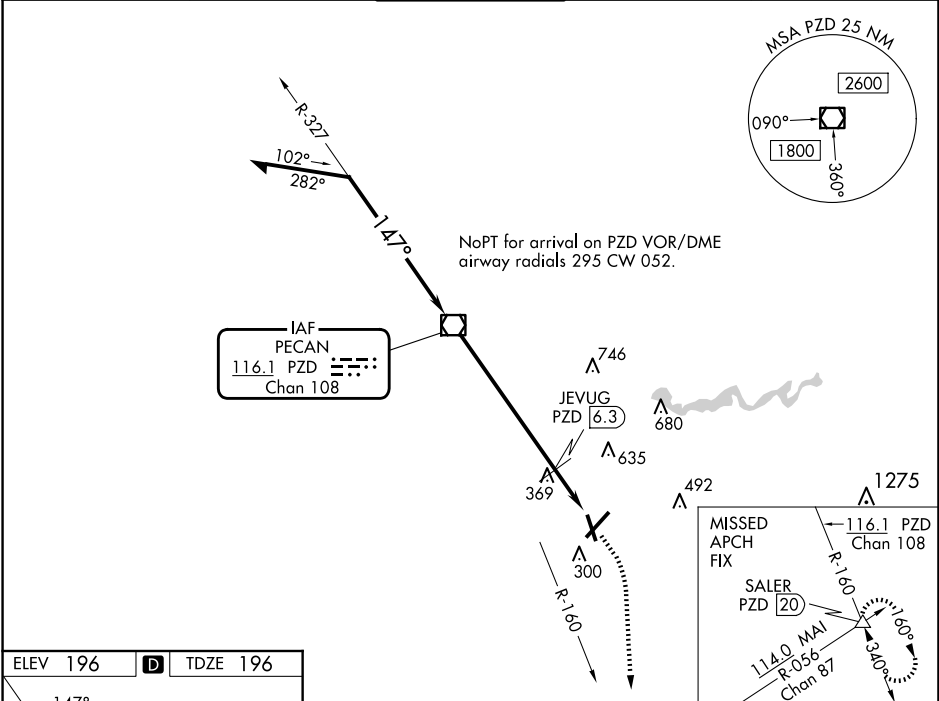


VOR/DME PZD	APP CRS	Rwy Ldg	5200
116.1	147°	TDZE	196
Chan 108		Apt Elev	196

VOR RWY 17
SOUTHWEST GEORGIA RGNL (ABY)

<div><div><div>▼</div><div>▲</div></div><div>Rwy 17 helicopter visibility reduction below ¾ SM NA.</div></div>		MISSED APPROACH: Climb to 1000 then climbing right turn to 3000 on heading 170° and PZD VOR/DME R-160 to SALER INT/20 DME and hold.		
ATIS 133.05	JACKSONVILLE CENTER 125.75 363.075	ALBANY TOWER★ 120.25(CTAF)0336.4	GND CON 121.9 348.6	UNICOM 122.95



VGSI and descent angles not coincident (VGSI Angle 3.00/TCH 49).					

SE-4, 10 JUL 2025 to 07 AUG 2025

SE-4, 10 JUL 2025 to 07 AUG 2025