

WAAS CH <b>78000</b> <b>W05A</b>	APP CRS <b>047°</b>	Rwy Idg <b>6601</b> TDZE <b>196</b> Apt Elev <b>196</b>
--	------------------------	---

RNAV (GPS) RWY 5

SOUTHWEST GEORGIA RGNL (ABY)

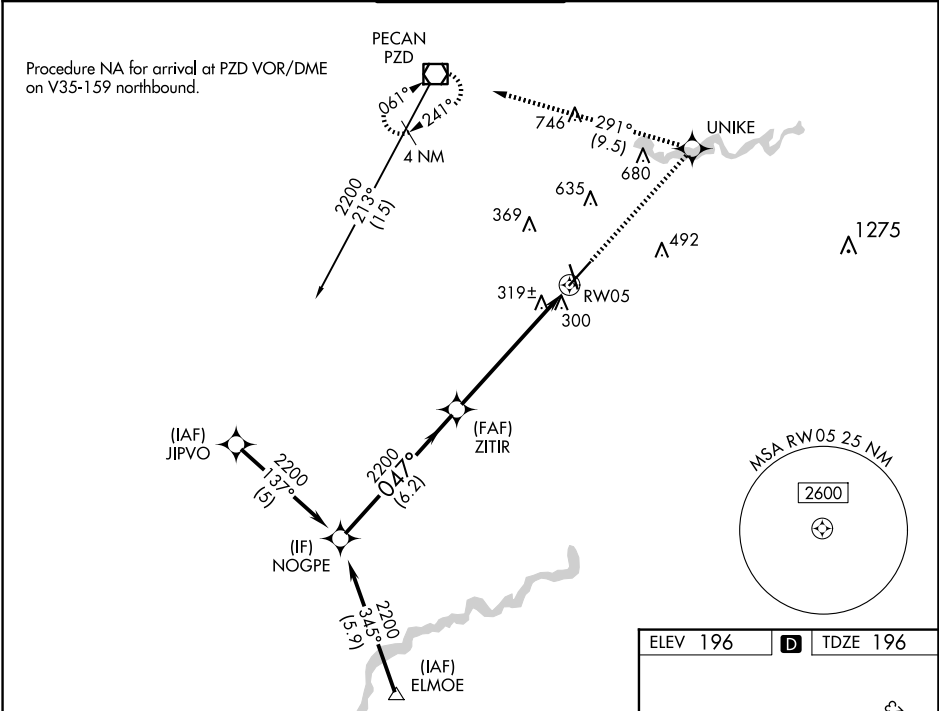
RNP APCH.

▼ For uncompensated Baro-VNAV systems, LNAV/VNAV NA below -7°C or above 54°C. For inop ALS, increase LNAV Cat D visibility to RVR 6000.  
▲ \*\* RVR 1800 authorized with use of FD or AP or HUD to DA.

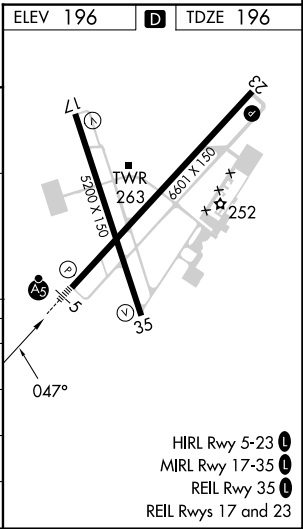


MISSED APPROACH: Climb to 2000 direct UNIKE and left turn on track 291° to PZD VOR/DME and hold.

ATIS <b>133.05</b>	JACKSONVILLE CENTER <b>125.75 363.075</b>	ALBANY TOWER ★ <b>120.25 (CTAF) 0336.4</b>	GND CON <b>121.9 348.6</b>	UNICOM <b>122.95</b>
-----------------------	--	---	-------------------------------	-------------------------



VGSI and RNAV glidepath not coincident (VGSI Angle 3.00/TCH 55).				
NOGPE		ZITIR	2000	UNIKE
2200		2200	↑	↖ tr 291°
GP 3.00°				PZD
TCH 60				
6.2 NM		5 NM	1 NM	
CATEGORY	A	B	C	D
LPV DA **	396/24 200 (200-½)			
LNAV/VNAV DA	635/50 439 (500-1)			
LNAV MDA	580/24		384 (400-½)	580/50 384 (400-1)
Ⓢ CIRCLING	640-1 444 (500-1)	660-1 464 (500-1)	940-2¼ 744 (800-2¼)	940-2½ 744 (800-2½)



SE-4, 10 JUL 2025 to 07 AUG 2025

SE-4, 10 JUL 2025 to 07 AUG 2025