

APCH CRS 338°	Rwy Idg 12,134 TDZE 4058 Arpt Elev 4093
------------------	-----------------------------------------------

AL-7 (USAF)

HOLLOMAN AFB (KHMN)

RNP APCH. DME/DME RNP-0.3 NA.

GPS required

T * When circling to Rwy 25 at night, operational VGSi required, remain on or above VGSi glidepath until threshold.

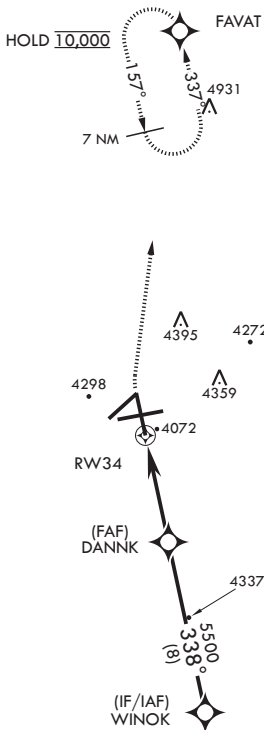
MISSED APPROACH: Climb to 4800 then climbing right turn to 10,000 direct FAVAT and hold, continue climb-in-hold to 10,000.

ATIS★ 273.5	ALBUQUERQUE CENTER 132.65 257.6	APP CON 120.6 269.225	TOWER★ 119.3 254.4	GND CON 127.05 275.8	CLNC DEL 126.7 289.4
----------------	------------------------------------	--------------------------	-----------------------	-------------------------	-------------------------

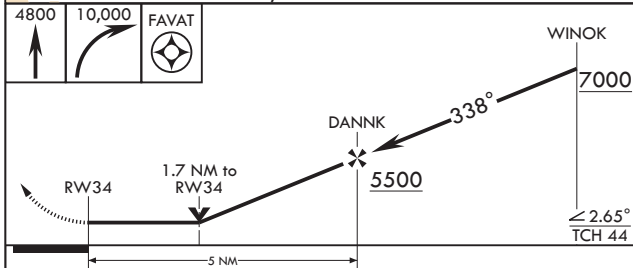
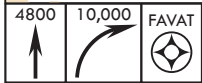
Visibility Reduction by Helicopter NA.

CAUTION: CAT E and portions of CAT D circling not fully contained in controlled airspace.

CAUTION: High terrain to East within 15 NM.



EMERG SAFE ALT 100 NM 14,200



CATEGORY	A	B	C	D	E
LNAB MDA	4540-1	482 (500-1)	4540-1 ³ / ₈	482	(500-1 ³ / ₈)
C CIRCLING*	4640-1	547 (600-1)	4680-1 ¹ / ₂ 587 (600-1 ¹ / ₂)	4740-2 647 (700-2)	4780-2 ¹ / ₂ 687 (700-2 ¹ / ₂)

