

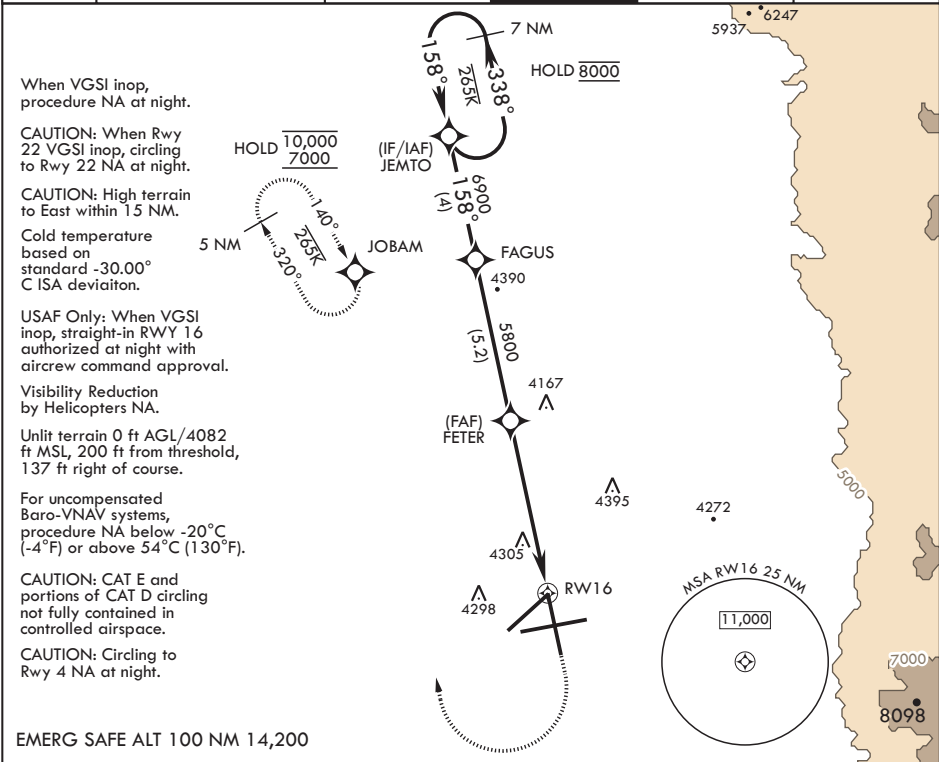
APCH CRS	Rwy Idg	12,134
158°	TDZE	4083
	Arprt Elev	4093

AL-7 (USAF)

HOLLOMAN AFB (KHMN)

RNP APCH-GPS	ALSF-1	MISSED APPROACH: Climb straight ahead to 7000, passing 5000 turn direct JOBAM, do not exceed 265 KIAS until turn completion and hold.
▼ * When ALS inop, increase vis to 1 3/8 miles. ** When ALS inop, increase CAT AB vis to 1 mile; CAT CDE vis to 1 3/8 miles.		

ATIS★ 273.5	ALBUQUERQUE CENTER 132.65 257.6	APP CON 120.6 269.225	TOWER★ 119.3 254.4	GND CON 127.05 275.8	CLNC DEL 126.7 289.4
----------------	------------------------------------	--------------------------	-----------------------	-------------------------	-------------------------



7 NM Holding Pattern JEMTO	5000	7000	JOBAM	ELEV 4093	TDZE 4083
GP 2.88° TCH 51					
CATEGORY	A	B	C	D	E
LNAV/VNAV DA*	4569-1	486	(500-1)		
LNAV MDA**	4600-3/4 517 (600-3/4)	4600-1	517 (600-1)		
Ⓢ CIRCLING	4640-1 547 (600-1)	4680-1 1/2 587 (600-1 1/2)	4740-2 647 (700-2)	4780-2 1/2 687 (700-2 1/2)	
					HIRL all Rwy REIL Rwy 22

SW-1, 10 JUL 2025 to 07 AUG 2025

SW-1, 10 JUL 2025 to 07 AUG 2025