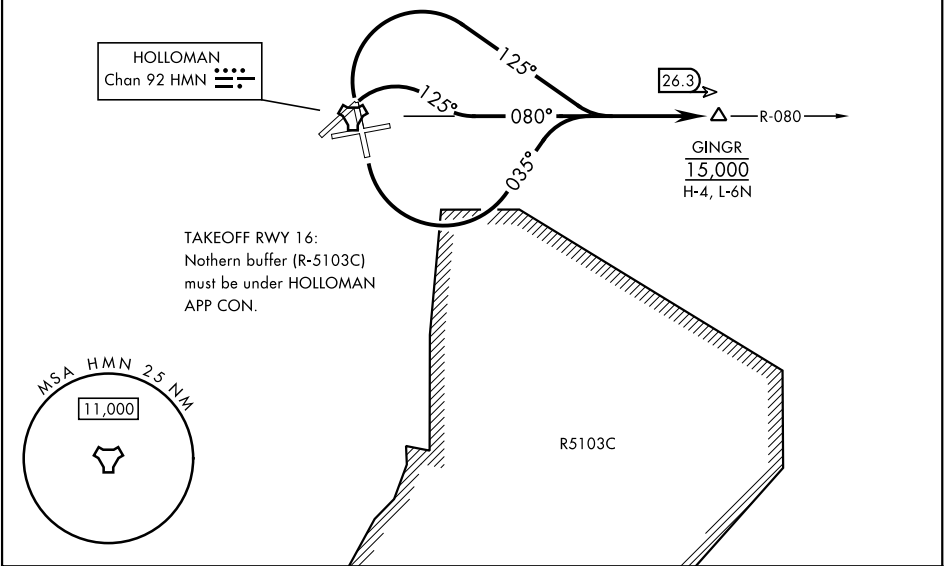


ATIS ★ 273.5	RADAR required	Rwy	Knots	60	120	180	240	300	360
CLNC DEL		04	ⓐ V/V(fpm)	477	954	1431	1908	2385	2862
126.7 289.4		16	ⓑ V/V(fpm)	501	1002	1503	2004	2505	3006
GND CON		34	ⓐ V/V(fpm)	458	916	1374	1832	2290	2748
127.05 275.8		Minimum Climb Rate							
TOWER ★		11,929		ⓐ to 11,500					
119.3 254.4		●		ⓑ to 12,000					
DEP CON									
128.1 284.0									
ALBUQUERQUE CENTER									
132.65 257.6									

MILITARY USE ONLY



DEPARTURE ROUTE DESCRIPTION	
TAKEOFF RWY 4:	Climbing right turn to track 125°, intercept HMN R-080 to GINGR. Cross GINGR at 15,000.
TAKEOFF RWY 16:	Climbing left turn to track 035°, intercept HMN R-080 to GINGR. Cross GINGR at 15,000.
TAKEOFF RWY 34:	Climbing right turn to track 125°, intercept HMN R-080 to GINGR. Cross GINGR at 15,000.

SW-1, 10 JUL 2025 to 07 AUG 2025

SW-1, 10 JUL 2025 to 07 AUG 2025