

TACAN HMN Chan <b>92</b>	APCH CRS <b>334°</b>	Rwy Idg <b>12,134</b> TDZE <b>4058</b> Arpt Elev <b>4093</b>
-----------------------------	-------------------------	--

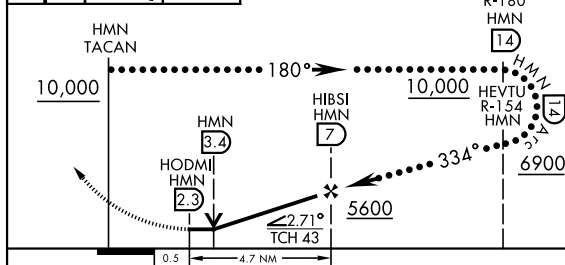
HOLLOMAN AFB (KHMN)

**MISSED APPROACH:** Climb straight ahead to 7000, passing 5000 turn left to intercept HMN TACAN R-320 to JOBAM and hold.

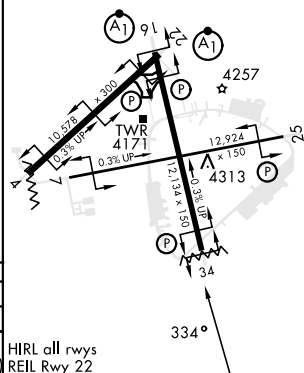
CLNC DEL  
**126.7 289.4**

5000	7000	HMN R-320
------	------	--------------

TDZE	4058
------	------



CATEGORY	A	B	C	D	E
S-34	4520-1	462 (500-1)	4520-1 $\frac{1}{2}$	462 (500-1 $\frac{1}{2}$ )	
CIRCLING	4620-1	527 (600-1)	5200-3 1107 (1200-3)	5200-3 1107 (1200-3)	5300-3 1207 (1300-3)



## Amdt 2 10JUL25