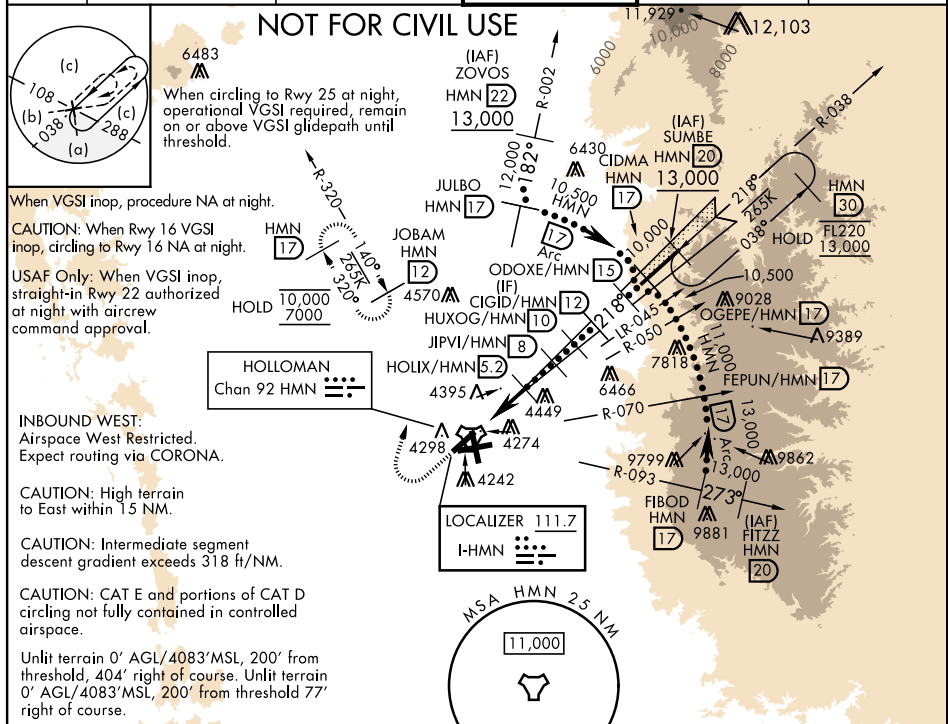
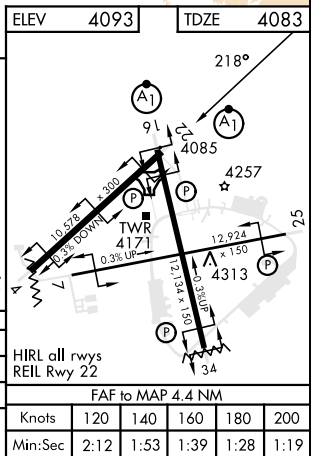


HI-ILS or LOC RWY 22

LOC I-HMN <b>111.7</b>	APCH CRS <b>218°</b>	Rwy Idg <b>10,578</b> TDZE <b>4083</b> Arpt Elev <b>4093</b>	[USAF]	HOLLOMAN AFB (KHMN)	
RADAR or DME required. *When ALS inop, increase vis to ¾ miles. **When ALS inop, increase vis to 1¾ miles.			ALSF-1 	MISSED APPROACH: Climb straight ahead to 7000, passing 5000 turn right and intercept HMN R-320 outbound to JOBAM and hold.	
ATIS★ <b>273.5</b>	ALBUQUERQUE CENTER <b>132.65 257.6</b>	APP CON <b>120.6 269.225</b>	TOWER★ <b>119.3 254.4</b>	GND CON <b>127.05 275.8</b>	CLNC DEL <b>126.7 289.4</b>



SW-1, 10 JUL 2025 to 07 AUG 2025



HI-ILS or LOC RWY 22