

ATIS ★ 273.5		RADAR required		Rwy	Knots	60	120	180	240	300	360
CLNC DEL				04	ⓐ V/V(fpm)	350	700	1050	1400	1750	2100
126.7 289.4				16	ⓑ V/V(fpm)	492	984	1476	1968	2460	2952
GND CON				34	ⓒ V/V(fpm)	350	700	1050	1400	1750	2100
127.05 275.8											
TOWER ★											
119.3 254.4											
DEP CON											
128.1 284.0											
ALBUQUERQUE CENTER											
132.65 257.6											

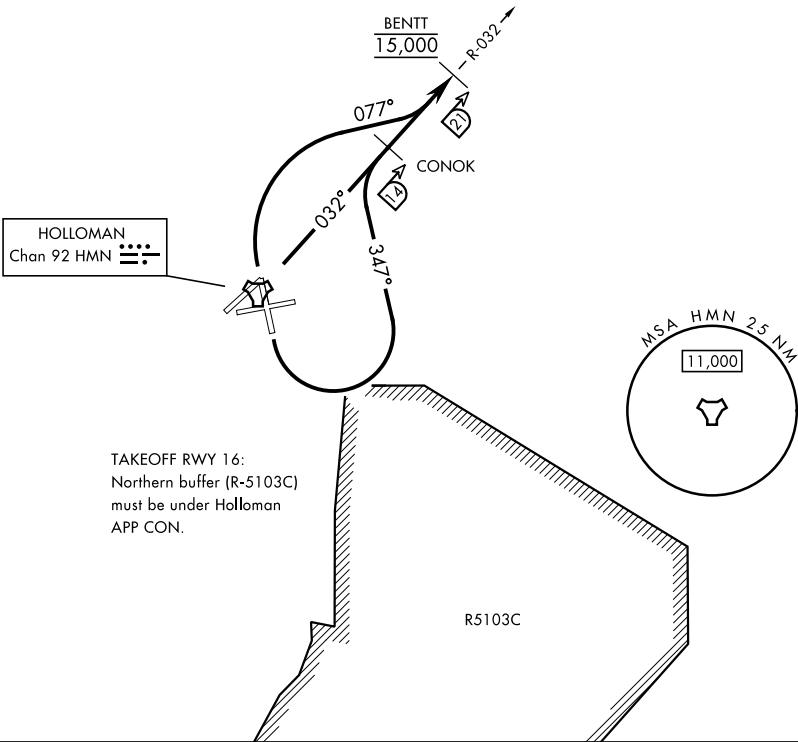
Minimum Climb Rate

ⓐ to 9300

ⓑ to 11,700

11,929

MILITARY USE ONLY



DEPARTURE ROUTE DESCRIPTION

- TAKEOFF RWY 4: Climb direct BENTT, cross BENTT at 15,000.
- TAKEOFF RWY 16: Climbing left turn to track 347°, intercept HMN R-032 direct CONOK, depart CONOK direct BENTT. Cross BENTT at 15,000.
- TAKEOFF RWY 34: Climbing right turn on track 077°, intercept HMN R-032 direct BENTT, cross BENTT at 15,000.

SW-1, 10 JUL 2025 to 07 AUG 2025

SW-1, 10 JUL 2025 to 07 AUG 2025