

LOM AK <u>362</u>	APP CRS 249°	Rwy Idg 6074 TDZE 1059 Apt Elev 1068
-----------------------------	------------------------	---

NDB RWY 25
AKRON FULTON INTL (AKR)

T Rwy 25 helicopter visibility reduction below 1 SM NA.
A Circling Rwy 7 NA at night.

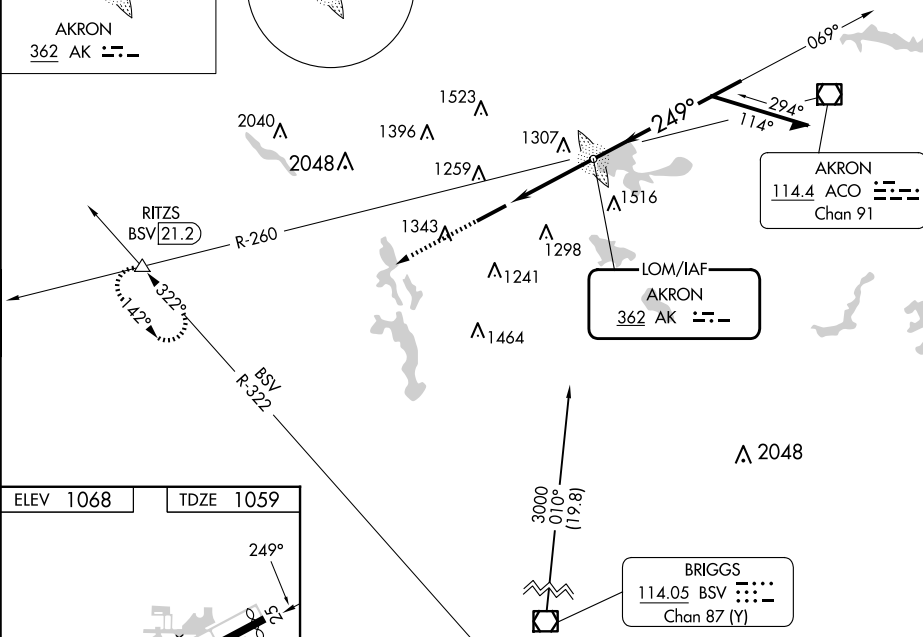
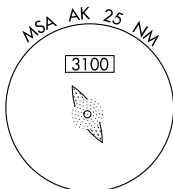
MISSED APPROACH: Climb to 3100 on heading 249° and BSV VOR/DME R-322 to RITZS INT/BSV 21.2 DME and hold.

ASOS 126.825	CLEVELAND APP CON ★ 125.5 371.875	CLNC DEL 121.6	UNICOM 123.075 (CTAF) 0
------------------------	---	--------------------------	-----------------------------------

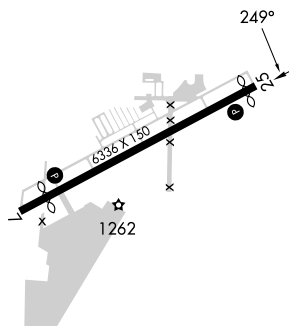
ALTERNATE MISSED
APCH FIX



AKRON
362 AK






ELEV 1068		TDZE 1059
-----------	--	-----------

REIL Rwy 7 and 25 **L**MIRL Rwy 7-25 **L**

FAF to MAP 3.7 NM

Knots	60	90	120	150	180
Min:Sec	3:42	2:28	1:51	1:29	1:14

3100  hdg 249°		BSV R-322	RITZ 	Visual Segment - Obstacles.			
		AK LOM		Remain within 10 NM 069° 3000 249° 2300			
CATEGORY	A	B	C	D			
S-25	1620-1	561 (600-1)	1620-1 $\frac{5}{8}$	561 (600-1 $\frac{5}{8}$)			
C CIRCLING	1620-1 552 (600-1)	1680-1 612 (700-1)	1800-2 732 (800-2)	1840-2 $\frac{1}{2}$ 772 (800-2 $\frac{1}{2}$)			