

LOC/DME I-AKR

110.9

Chan **46**

APP CRS

249°

Rwy Idg

6074

TDZE

1059

Apt Elev

1068

LOC RWY 25

AKRON FULTON INTL (AKR)

ADF or DME or RADAR required for procedure entry.

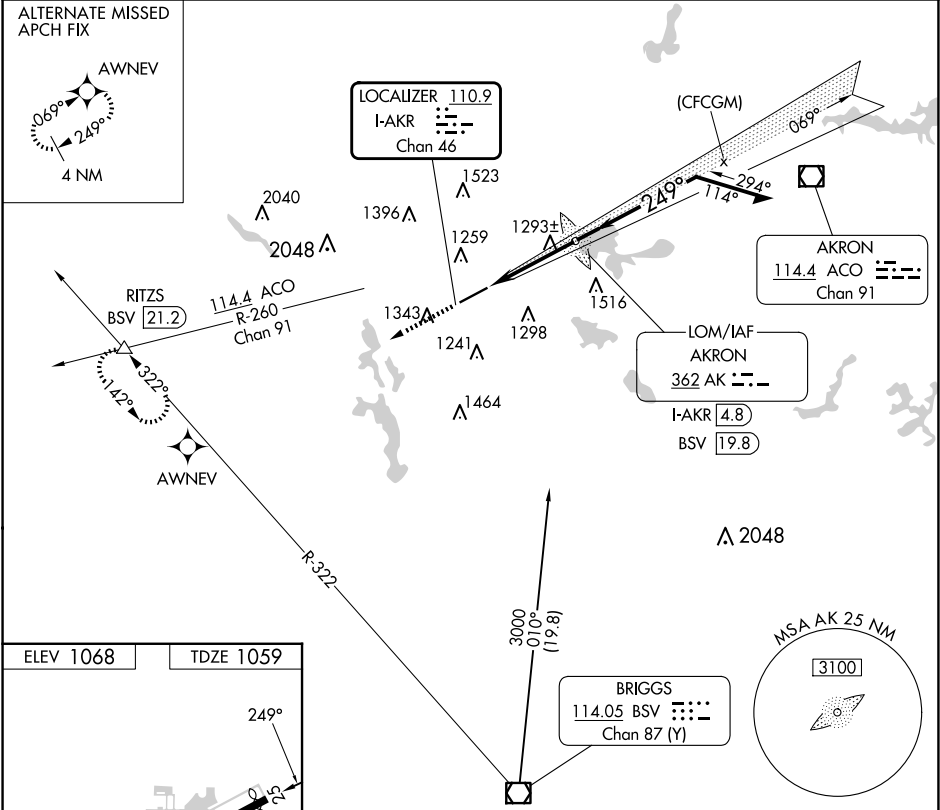
▼

▲

Rwy 25 helicopter visibility reduction below 1 SM NA.
Circling Rwy 7 NA at night.

MISSED APPROACH: Climb to 3100 on heading 249° and BSV VOR/DME R-322 to RITZS INT/BSV 21.2 DME and hold.

ASOS 126.825	CLEVELAND APP CON ★ 125.5 371.875	CLNC DEL 121.6	UNICOM 123.075 (CTAF) 0
------------------------	---	--------------------------	-----------------------------------



REIL Rwy 7 and 25
MIRL Rwy 7-25

FAF to MAP 3.7 NM

Knots	60	90	120	150	180
Min:Sec	3:42	2:28	1:51	1:29	1:14

3100	BSV R-322	RITZS △	AK LOM I-AKR 4.8		Remain within 10 NM
hdg 249°	Visual Segment - Obstacles.				
I-AKR 1.2	2300		069°		3000
3.7 NM		249°		3000	

CATEGORY	A	B	C	D
S-LOC 25	1560-1	501 (500-1)	1560-1 ³ / ₈	501 (500-1 ³ / ₈)
CIRCLING	1600-1 532 (600-1)	1680-1 612 (700-1)	1800-2 732 (800-2)	1840-2 ¹ / ₂ 772 (800-2 ¹ / ₂)