

ABILENE, TEXAS

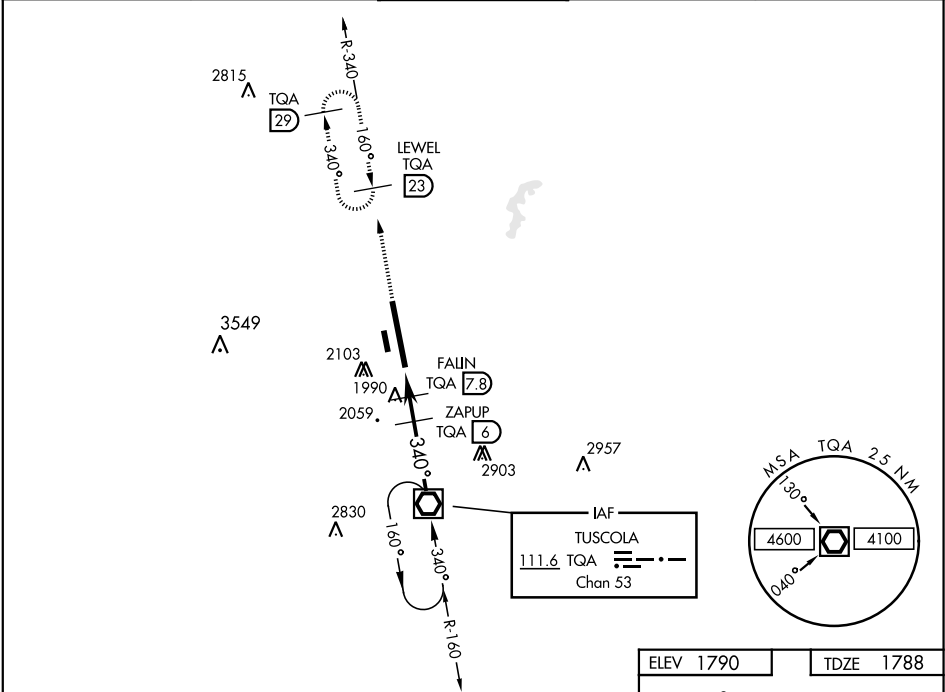
VOR/DME RWY 34

VOR/DME TQA	APCH CRS	Rwy Idg
111.6	340°	13,500
Chan 53		TDZE 1788
		Arprt Elev 1790

AL-2 [USAF]

DYESS AFB (KDYS)

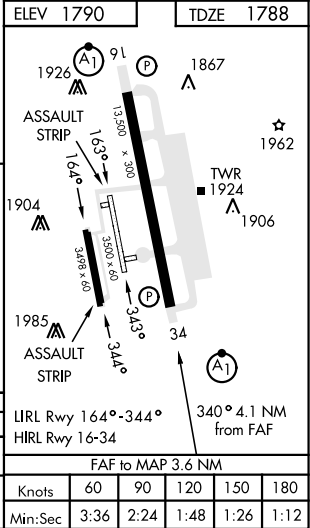
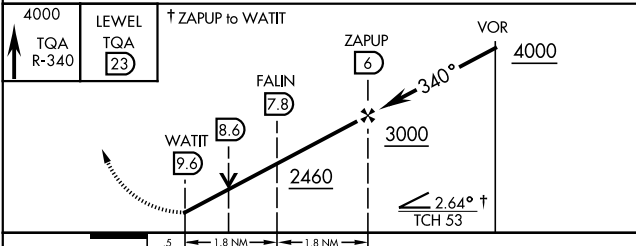
* When ALS inop, increase CAT AB RVR to 55 and vis to 1 mile, CAT CDE RVR vis to 1 3/8 miles. ** Circling to other than Rwy 16 NA			ALSF-1 A1	MISSED APPROACH: Climb to 4000 via TQA VOR/DME R-340 to LEWEL and hold.
ATIS ★ 269.175	ABILENE APP CON 125.0 338.3 EAST 127.2 282.3 WEST	DYESS TOWER 133.0 257.675	GND CON 118.35 275.8	ASR



SC-2, 10 JUL 2025 to 07 AUG 2025

SC-2, 10 JUL 2025 to 07 AUG 2025

EMERG SAFE ALT 100 NM 4600



CATEGORY	A	B	C	D	E
S-34 *	2260/24 472 (500-1/2)	2260/50 472 (500-1)			
CIRCLING **	2300-1 510 (600-1)	2320-1 530 (600-1)	2460-1 3/4 670 (700-1 3/4)	2460-2 670 (700-2)	2460-2 1/4 670 (700-2 1/4)

ABILENE, TEXAS

Amtd 3 10NOV16

32°25' -99°51'W

DYESS AFB (KDYS)

VOR/DME RWY 34