

VOR/DME RWY 16

VOR/DME TQA 111.6 Chan 53	APCH CRS 160°	Rwy Idg 13,500 TDZE 1790 Arpt Elev 1790
---	-------------------------	--

AL-2 [USAF]

DYESS AFB (KDYS)

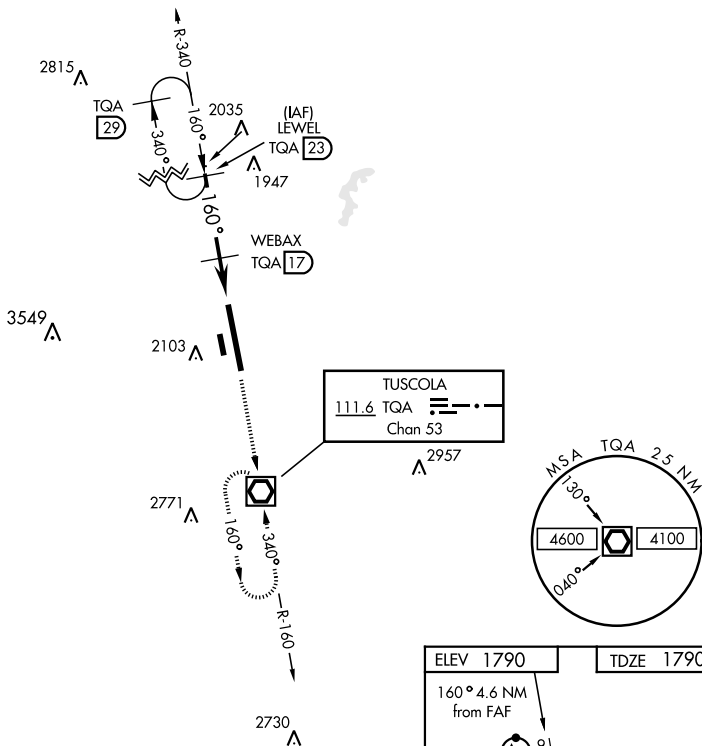
* When ALS inop, increase CAT AB RVR to 55 and vis to 1 mile,
CAT CDE vis to 1 3/8 miles.

** Circling to other than Rwy 34 NA.

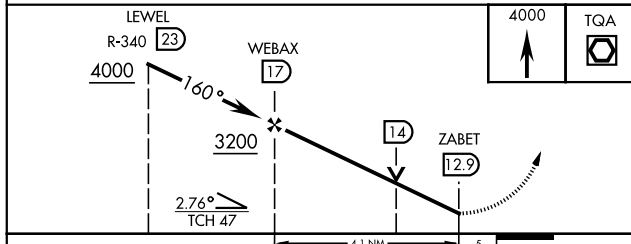
ALSF-1

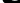
MISSED APPROACH: Climb and maintain 4000 proceed direct TQA and hold.

ATIS ★ 269.175	ABILENE APP CON 125.0 338.3 EAST 127.2 282.3 WEST	DYESS TOWER 133.0 257.675	GND CON 118.35 275.8	ASR
-------------------	---	------------------------------	-------------------------	-----



EMERG SAFE ALT 100 NM 4600



CATEGORY	A	B	C	D	E	<div> <div>STRIP</div> <div> <div> <div>HIRL Rwy 16-34</div> <div>LIRL Rwy 164°-344°</div> </div> <div> <div>FAF to MAP 4.1 NM</div> <div> <div>Knots</div> <div>60</div> <div>90</div> <div>120</div> <div>150</div> <div>180</div> </div> <div> <div>Min:Sec</div> <div>4:06</div> <div>2:44</div> <div>2:03</div> <div>1:38</div> <div>1:22</div> </div> </div> </div> </div>
S-16 *	2300/24	510 (600-½)	2300/55	510 (600-1)		
 CIRCLING**	2300-1 510 (600-1)	2320-1 530 (600-1)	2460-1¾ 670 (700-1½)	2460-2 670 (700-2)	2460-2¼ 670 (700-2¼)	

ABILENE, TEXAS

32°25'N-99°51'W

DYESS AFB (KDYS)

VOR/DME RWY 16

SC-2, 10 JUL 2025 to 07 AUG 2025

SC-2, 10 JUL 2025 to 07 AUG 2025