
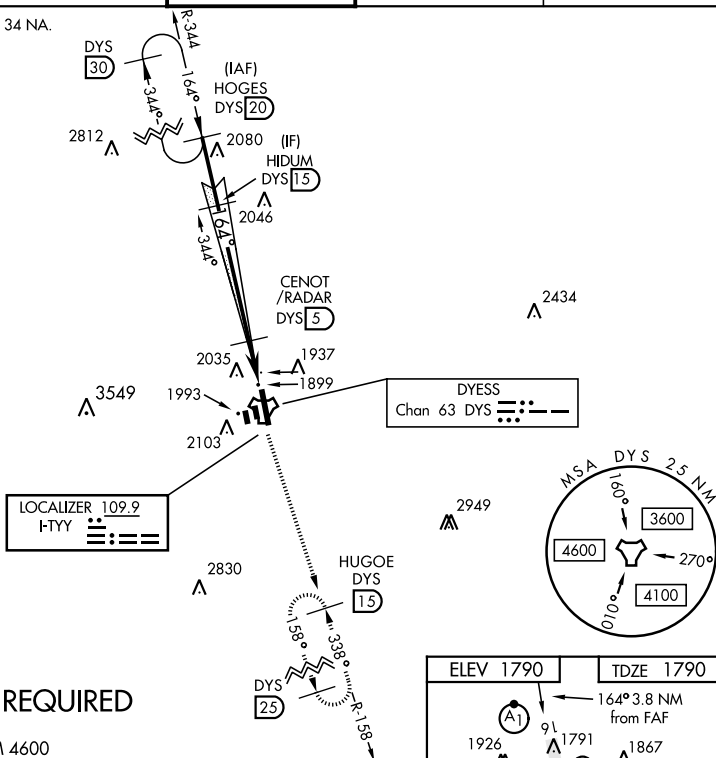


ILS or LOC W RWY 16

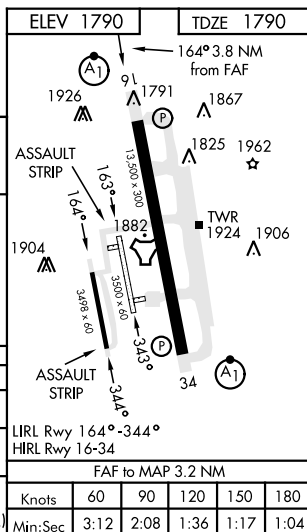
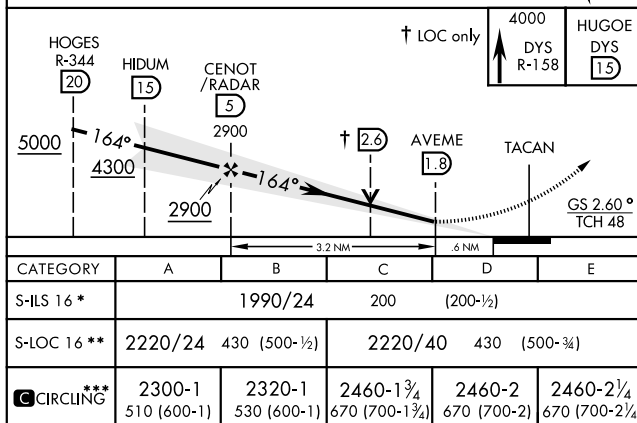
LOC I-TYY 109.9	APCH CRS 164°	Rwy Idg 13,500 TDZE 1790 Arpt Elev 1790	AL-2 [USAF]	DYESS AFB (KDYS)
* When ALS inop, increase all CAT RVR to 40 and vis to ¾ mile. ** When ALS inop, increase CAT AB RVR to 55 and vis to 1 mile, CAT CDE vis to 1 ¼ miles.			ALSF-1 	MISSED APPROACH: Climb to 4000 via DYS TACAN R-158 to HUGOE and hold.
ATIS ★ 269.175	ABILENE APP CON 125.0 338.3 EAST 127.2 282.3 WEST	DYESS TOWER 133.0 257.675	GND CON 118.35 275.8	ASR

*** Circling to other than Rwy 34 NA.



RADAR or DME REQUIRED

EMERG SAFE ALT 100 NM 4600



ILS or LOC W RWY 16