

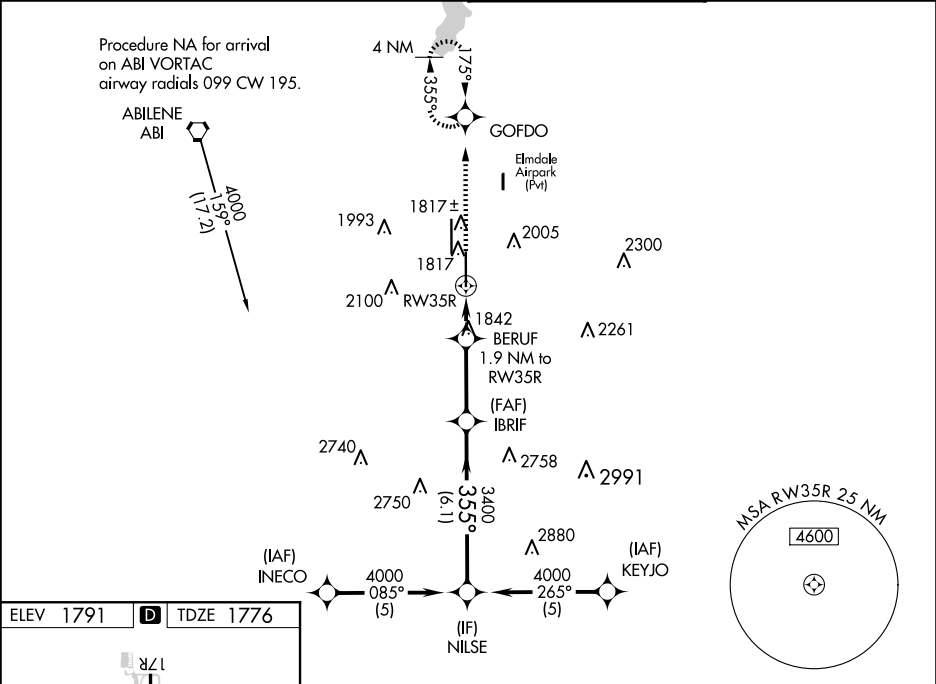
WAAS CH <b>97517</b> <b>W35A</b>	APP CRS <b>355°</b>	Rwy Idg TDZE <b>1776</b> Apt Elev <b>1791</b>
--	------------------------	---

RNAV (GPS) RWY 35R

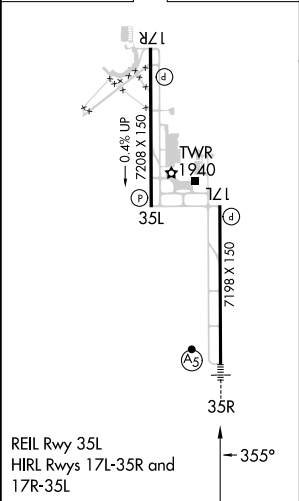
ABILENE RGNL (ABI)

RNP APCH.		MALSR	MISSED APPROACH: Climb to 4000 direct GOFDO and hold, continue climb-in-hold to 4000.
For uncompensated Baro-VNAV systems, LNAV/VNAV NA below -18°C or above 45°C. For inop ALS, increase LPV Cat E visibility to RVR 4000, LNAV/VNAV all Cats to RVR 6000, and LNAV Cats C/D/E to 1¾SM. ** RVR 1800 authorized with use of FD or AP or HUD to DA.			

ATIS <b>118.25</b>	ABILENE APP CON <b>125.0 338.3 (EAST)</b> <b>127.2 282.3 (WEST)</b>	ABILENE TOWER <b>120.1 257.8</b>	GND CON <b>121.7 348.6</b>
-----------------------	---	-------------------------------------	-------------------------------



ELEV 1791	D	TDZE 1776
-----------	---	-----------



4000	GOFDO	BERUF	IBRIF	NILSE	4000
*LNAV only.		1.9 NM to RW35R			GP 3.00° TCH 58
RW35R		*1.3 NM to RW35R	*2440	3400	
-1.3 NM		0.6	3 NM	6.1 NM	
CATEGORY	A	B	C	D	E
LPV	DA**	1976/24 200 (200-½)			
LNAV/VNAV	DA	2189/40 413 (400-¾)			2189/50 413 (400-1)
LNAV MDA	2260/24 484 (500-½)		2260/50 484 (500-1)		
CIRCLING	2300-1 509 (600-1)	2320-1 529 (600-1)	2420-1¾ 629 (700-1¾)	2460-2 669 (700-2)	2620-3 829 (900-3)