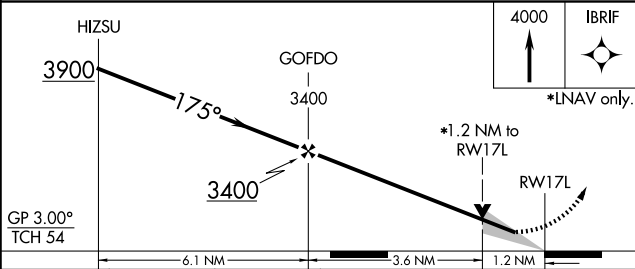
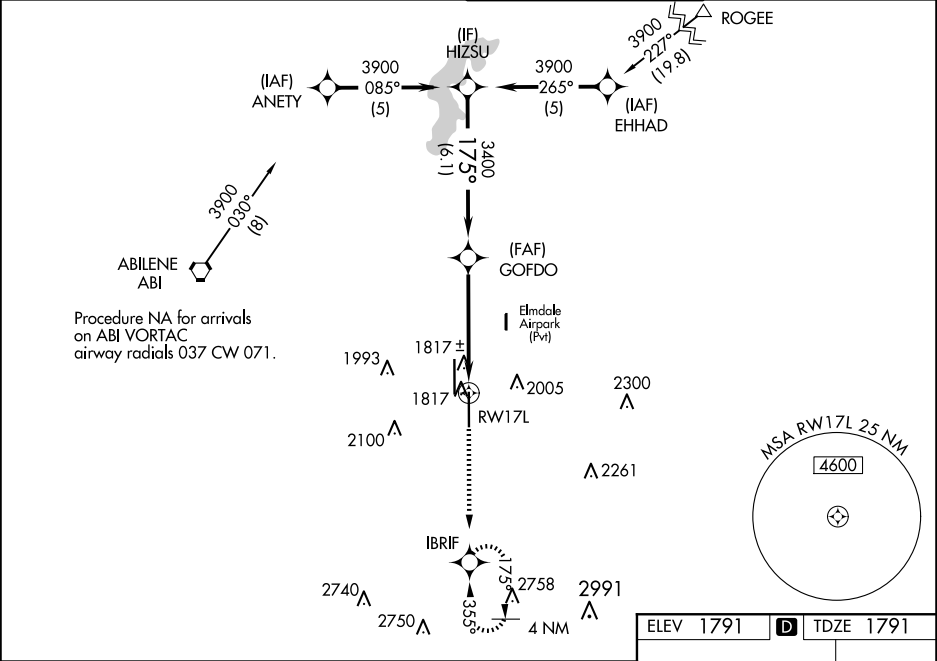


WAAS CH <b>50317</b> <b>W17A</b>	APP CRS <b>175°</b>	Rwy Idg TDZE <b>1791</b> Apt Elev <b>1791</b>
--	------------------------	---

RNAV (GPS) RWY 17L  
ABILENE RGNL (ABI)

RNP APCH.	MISSED APPROACH: Climb to 4000 direct IBRIF and hold, continue climb-in-hold to 4000.
<p><b>▽</b> <b>▲</b></p> <p>For uncompensated Baro-VNAV systems, LNAV/VNAV NA below -18°C or above 45°C.</p>	

ATIS <b>118.25</b>	ABILENE APP CON <b>125.0 338.3 (EAST)</b> <b>127.2 282.3 (WEST)</b>	ABILENE TOWER <b>120.1 257.8</b>	GND CON <b>121.7 348.6</b>
-----------------------	---	-------------------------------------	-------------------------------



ELEV 1791	<b>D</b>	TDZE 1791
-----------	----------	-----------

The diagram illustrates a runway layout with the following features:

- Runway 35L:** A vertical runway segment with a length of 7208 x 150 feet. It is marked with a 'P' at the top and a '35L' at the bottom.
- Runway 35R:** A vertical runway segment with a length of 7198 x 150 feet, located to the right of Runway 35L. It is marked with a '35R' at the bottom.
- Runway 17L:** A horizontal runway segment at the top, oriented 175 degrees. It is marked with a '17L' at the left end and a '17R' at the right end.
- TWR (Tower):** Located at the intersection of Runway 35L and Runway 17L, with an elevation of 1940 feet.
- Navigation Aids:**
  - A-5:** A VORTAC station located at the bottom of Runway 35R.
  - Star Symbols:** Located at the top of Runway 35L and at the left end of Runway 17L.
- Other Markings:** A '0.4% UP' slope indicator is shown on Runway 35L. A '17L' marking is also present at the top of Runway 35L.

REIL Rwy 35L  
HIRL Rwy 17L-35R and 17R-35L