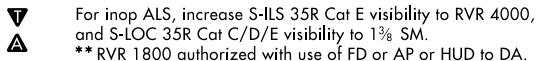
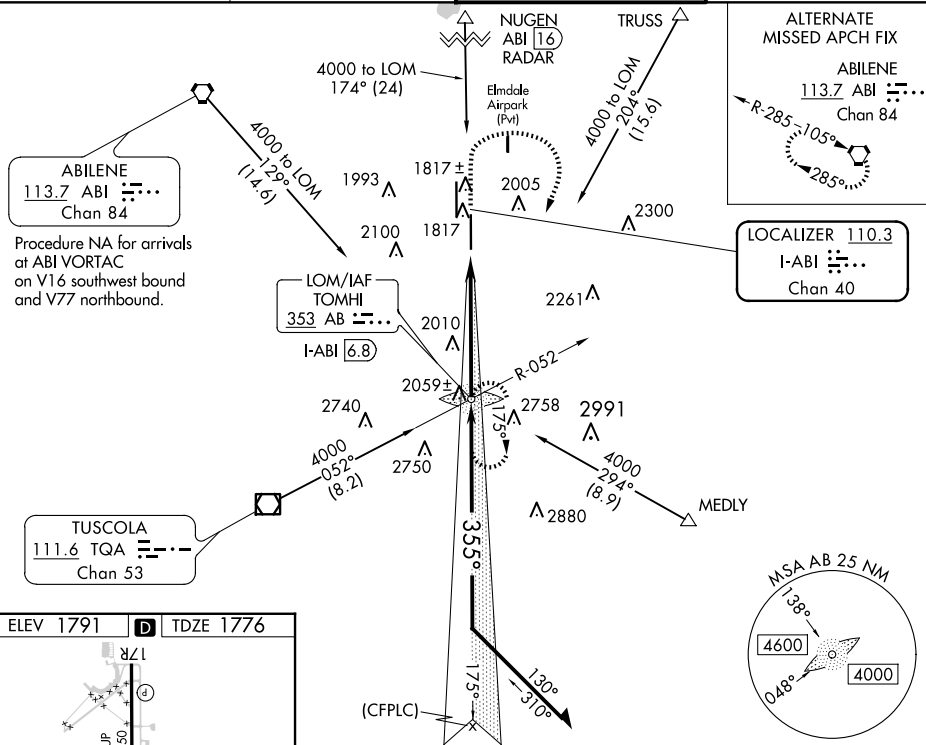


ILS or LOC RWY 35R  
ABILENE RGNL (ABI)

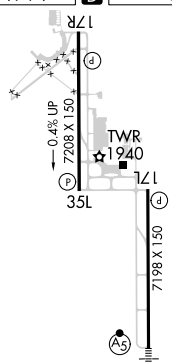
**MISSED APPROACH:** Climb to 3300 then climbing right turn to 4000 direct TOMHI LOM/INT/I-ABI 6.8 DME and hold.



GND CON  
121.7 348.6



ELEV 1791	<b>D</b>	TDZE 1776
-----------	----------	-----------



REIL Rwy 35L  
HIRL Rwys 17L-35R and  
17R-35L

FAF to MAP 5.4 NM

Knots	60	90	120	150	180
Min:Sec	5:24	3:36	2:42	2:10	1:48

ILS or LOC RWY 35R