

WAAS CH <b>53622</b> <b>W23A</b>	APP CRS <b>232°</b>	Rwy ldg <b>4000</b> TDZE <b>441</b> Apt Elev <b>441</b>
--	------------------------	---

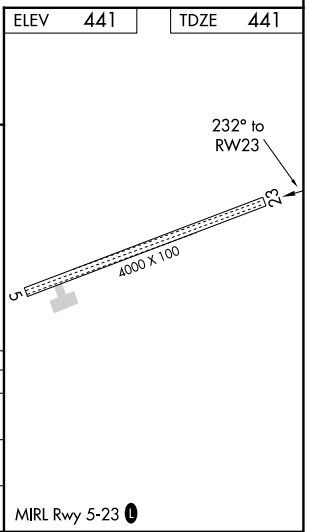
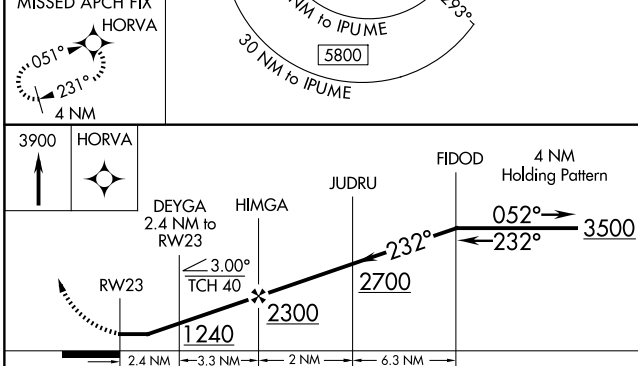
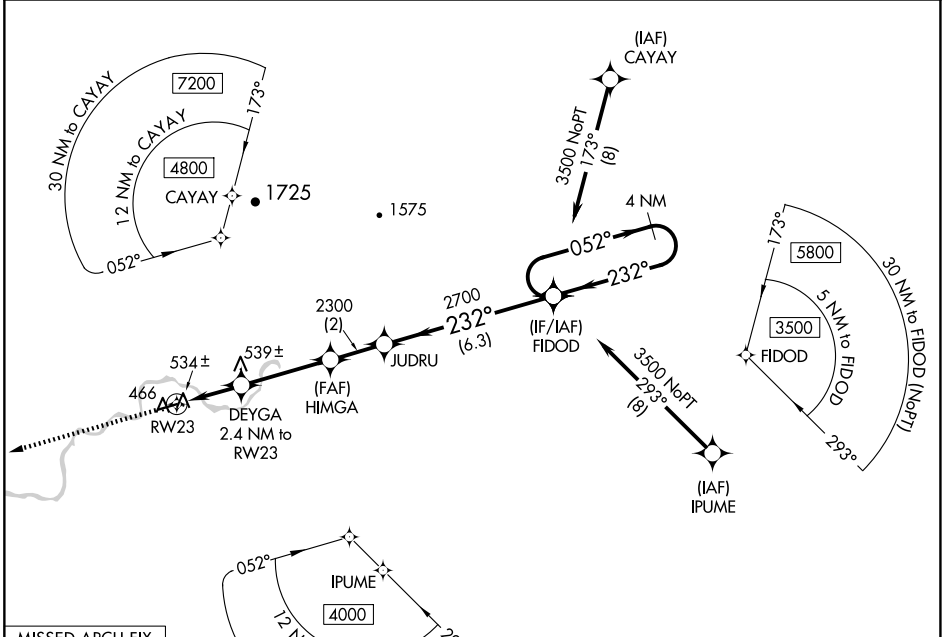
# RNAV (GPS) RWY 23

ALLAKAKET (6A8) (PFAL)

**NA**  
DME/DME RNP-0.3 NA. Visibility reduction by helicopter below 3/4 SM NA. Use Bettes altimeter setting.

MISSED APPROACH: Climb to 3900 direct HORVA and hold, continue climb-in-hold to 3900.

BTT/PABT ASOS <b>135.45</b>	ANCHORAGE CENTER <b>124.6 352.0</b>	FAIRBANKS RADIO <b>122.2</b>	CTAF <b>122.9</b>
--------------------------------	--	---------------------------------	----------------------



CATEGORY	A	B	C	D
LP MDA	900-1	459 (500-1)	900-1 3/8 459 (500-1 3/8)	NA
LNAV MDA	900-1	459 (500-1)	900-1 3/8 459 (500-1 3/8)	NA
CIRCLING	1100-1 659 (700-1)	1220-1 779 (800-1)	1240-2 1/4 799 (800-2 1/4)	NA

MIRL Rwy 5-23

AK, 17 APR 2025 to 12 JUN 2025

AK, 17 APR 2025 to 12 JUN 2025