

|  |                        |                             |   |
|--|------------------------|-----------------------------|---|
| WAAS<br>CH <b>61031</b><br><b>W09A</b> | APP CRS<br><b>086°</b> | Rwy Idg<br>TDZE<br>Apt Elev | <b>4502</b><br><b>6046</b><br><b>6056</b> |
|--|------------------------|-----------------------------|---|

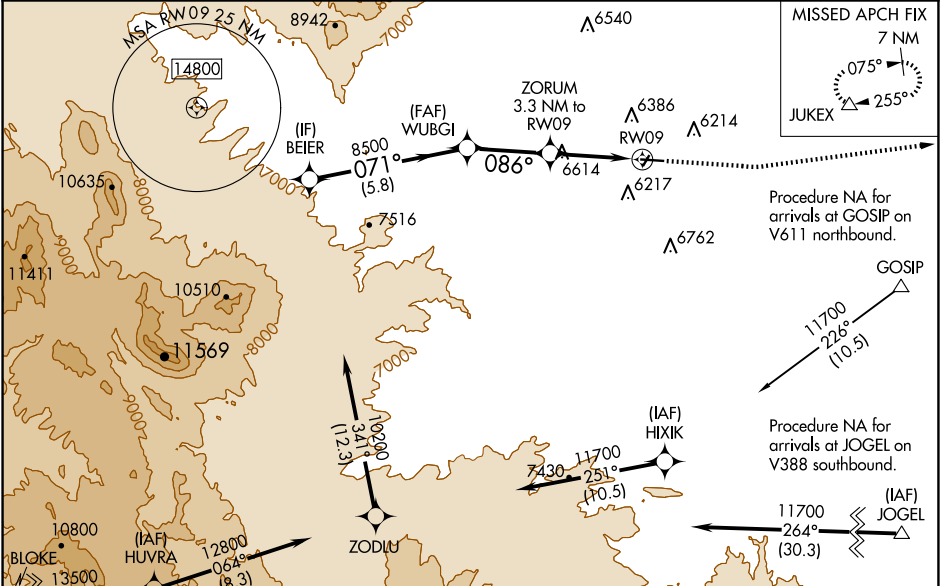
# RNAV (GPS) RWY 9

SPANISH PEAKS AIRFIELD (4V1)

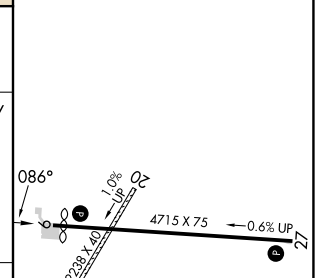
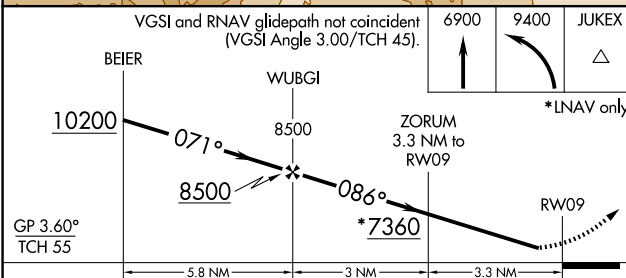
**⚠** Baro-VNAV NA when using Trinidad altimeter setting. For uncompensated Baro-VNAV systems, procedure NA below -26°C (-14°F) or above 36°C (98°F). DME/DME RNP-0.3 NA. Helicopter visibility reduction below 1 SM NA.  
**⚠** Rwy 9 Straight-in and Circling minimums NA at night. When local altimeter setting not received, use Trinidad altimeter setting and increase all DA 119 feet and MDA 120 feet; increase LPV all Cats visibility 1/8 mile and LNAV/VNAV all Cats visibility 3/8 mile, LNAV Cats A-B and Circling Cat B visibility 1/4 mile, LNAV Cat C visibility 1/2 mile.

**MISSED APPROACH:**  
 Climb to 6900 then climbing left turn to 9400 direct JUKEK and hold.

|                          |  |  |
|--------------------------|--|--|
| AWOS-3PT<br><b>123.6</b> | DENVER CENTER<br><b>128.375 379.95</b> | UNICOM<br><b>122.8 (CTAF)</b> <b>0</b> |
|--------------------------|--|--|



|                  |                           |
|------------------|---------------------------|
| ELEV <b>6056</b> | <b>D</b> TDZE <b>6046</b> |
|------------------|---------------------------|



| CATEGORY          | A                     | B                             | C                             | D  |
|-------------------|-----------------------|-------------------------------|-------------------------------|----|
| LPV DA            | 6347-1                | 301 (300-1)                   |                               | NA |
| LNAV/VNAV DA      | 6606-1 5/8            | 560 (600-1 5/8)               |                               | NA |
| LNAV MDA          | 6880-1<br>834 (900-1) | 6880-1 1/4<br>834 (900-1 1/4) | 6880-2 1/2<br>834 (900-2 1/2) | NA |
| <b>C</b> CIRCLING | 6880-1 1/4            | 824 (900-1 1/4)               | 7080-3<br>1024 (1100-3)       | NA |

MIRL Rwy 9-27 **0**

SW-1, 17 APR 2025 to 15 MAY 2025

SW-1, 17 APR 2025 to 15 MAY 2025