

(RACER8.MCI) 24137

RACER EIGHT DEPARTURE

MIDWEST NTL AIR CENTER (GPH)
MOSBY, MISSOURI

AL-9229 (FAA)

KANSAS CITY DEP CON
118.4 307.35
CLNC DEL
118.2

RADAR required.

TOP ALTITUDE:
10000

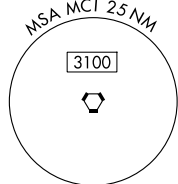
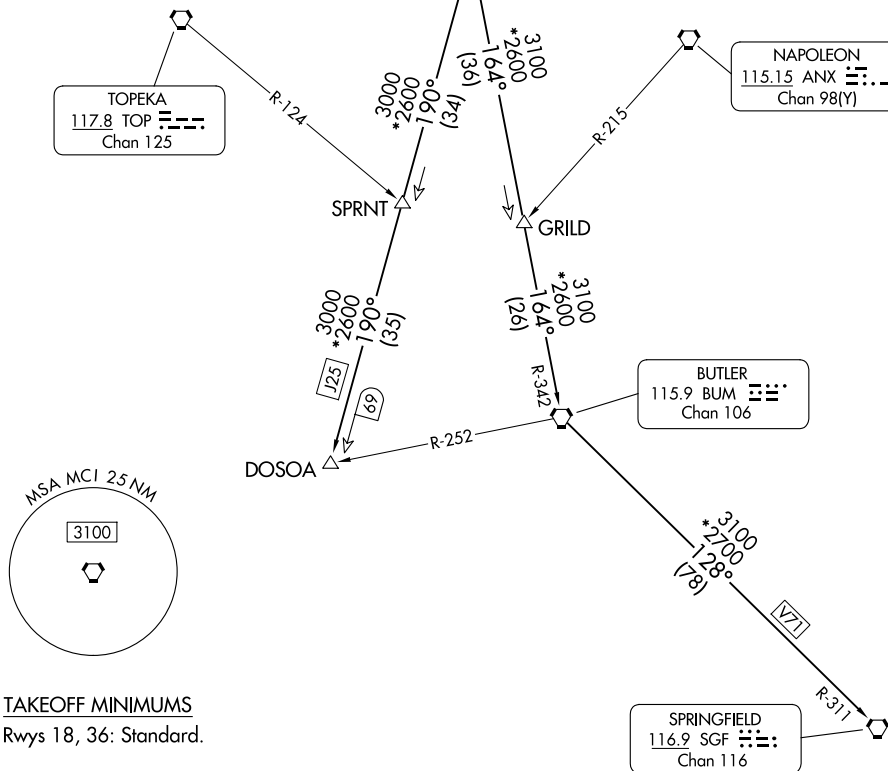
KANSAS CITY
113.25 MCI
Chan 79(Y)

TOPEKA
117.8 TOP
Chan 125

NAPOLEON
115.15 ANX
Chan 98(Y)

BUTLER
115.9 BUM
Chan 106

SPRINGFIELD
116.9 SGF
Chan 116



TAKEOFF MINIMUMS

Rwys 18, 36: Standard.

NOTE: Chart not to scale.

DEPARTURE ROUTE DESCRIPTION

TAKEOFF ALL RUNWAYS: Climb on assigned heading for RADAR vectors to appropriate route. Maintain 10000 or as assigned by ATC, expect filed altitude 10 minutes after departure.

BUTLER TRANSITION (RACER8.BUM): From over MCI VORTAC on MCI R-164 and BUM R-342 to BUM VORTAC.

DOSOA TRANSITION (RACER8.DOSOA): From over MCI VORTAC on MCI R-190 to DOSOA.

SPRINGFIELD TRANSITION (RACER8.SGF): From over MCI VORTAC on MCI R-164 and BUM R-342 to BUM VORTAC, then on BUM R-128 and SGF R-311 to SGF VORTAC.

RACER EIGHT DEPARTURE

(RACER8.MCI) 05OCT23

MOSBY, MISSOURI
MIDWEST NTL AIR CENTER (GPH)

NC-3, 17 APR 2025 to 15 MAY 2025

NC-3, 17 APR 2025 to 15 MAY 2025