

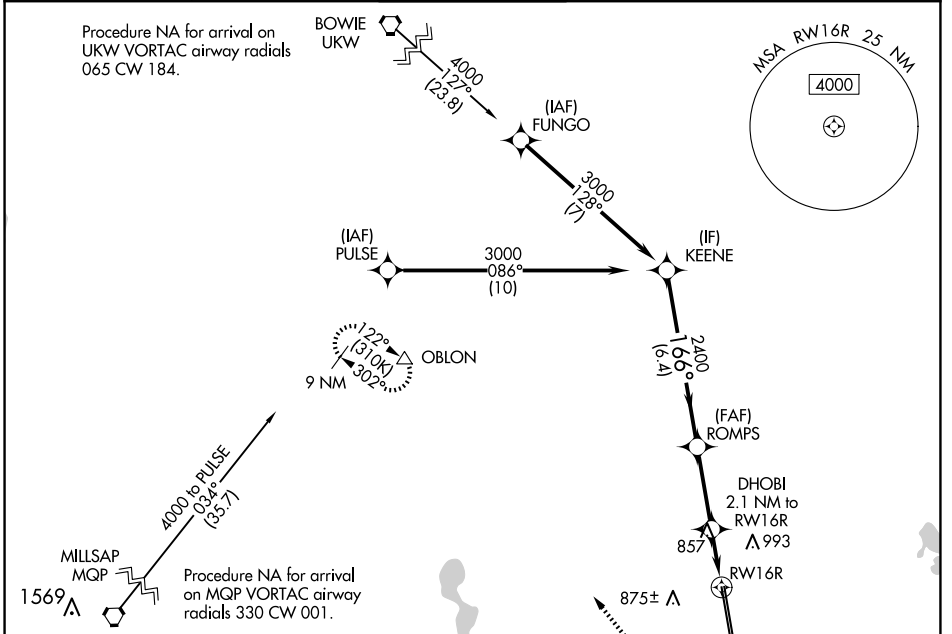
WAAS CH 99338 W16A	APP CRS 166°	Rwy Idg 10410 TDZE 721 Apt Elev 723
--	------------------------	--

RNAV (GPS) RWY 16R

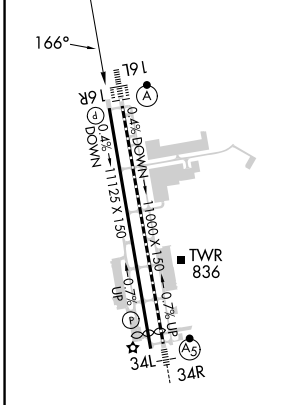
PEROT FLD/FORT WORTH ALLIANCE (AFW)

RNP APCH-GPS.		MISSED APPROACH: Climb to 1200 then climbing right turn to 3000 direct OBLON and hold.		
<p>▼ For uncompensated Baro-VNAV systems, LNAV/VNAV NA below -9°C or above 54°C. Circling NA east of Rwy 16L-34R.</p>				

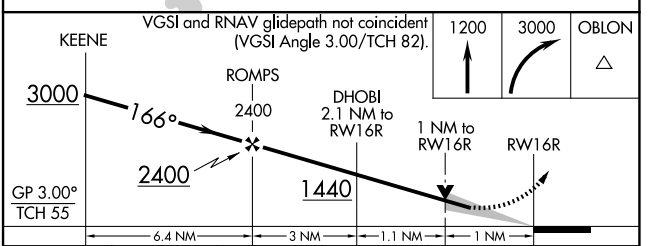
ATIS 126.925	LONE STAR APP CON 118.1 306.95	ALLIANCE TOWER 135.15 257.9	GND CON 132.65 306.2	CLNC DEL 128.725
------------------------	--	---------------------------------------	--------------------------------	----------------------------



ELEV 723	D	TDZE 721
----------	----------	----------



TDZ/CL Rws 16L and 34R
HIRL Rwy 16L-34R and 16R-34L
REIL Rws 16R and 34L



CATEGORY	A	B	C	D	E
LPV DA		921-1	200 (200-1)		
LNAV/VNAV DA		1017-1	296 (300-1)		
LNAV MDA	1120-1	399 (400-1)	1120-1½	399 (400-1½)	
C CIRCLING	1200-1 477 (500-1)	1320-1 597 (600-1)	1360-1¾ 637 (700-1¾)	1380-2 657 (700-2)	1380-2½ 657 (700-2½)

RNAV (GPS) RWY 16R

SC-2, 17 APR 2025 to 15 MAY 2025

SC-2, 17 APR 2025 to 15 MAY 2025