

WAAS CH 82541 W16B	APP CRS 166°	Rwy Idg TDZE Apt Elev	10600 723 723
--	------------------------	-----------------------------	--

RNAV (GPS) RWY 16L

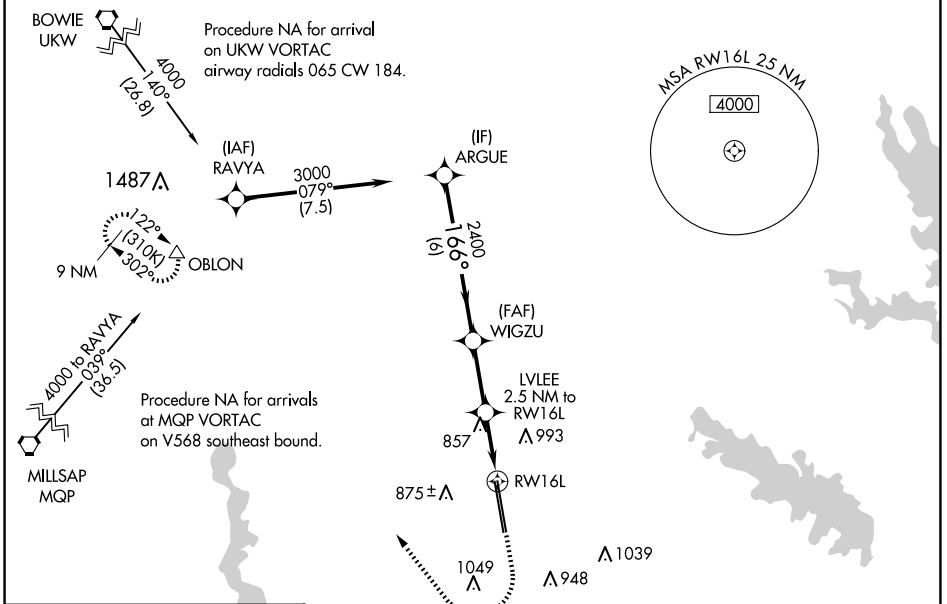
PEROT FLD/FORT WORTH ALLIANCE (A.F.W)

⚠ For uncompensated Baro-VNAV systems, LNAV/VNAV NA below -8°C (18°F) or above 54°C (130°F). Circling NA east of Rwy 16L-34R. DME/DME RNP-0.3 NA. For inop ALS, increase LPV Cat E visibility to RVR 4000, LNAV/VNAV all Cats visibility to RVR 4500 and LNAV Cat E visibility to RVR 6000.

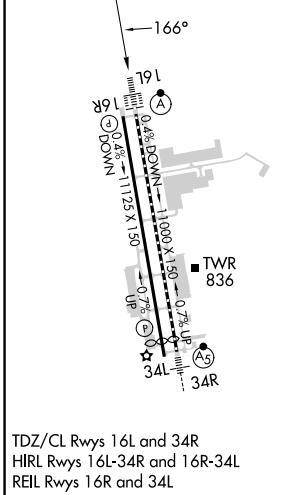
ALSF-2

MISSED APPROACH: Climb to 1200 then climbing right turn to 3000 direct OBLON and hold.

ATIS 126.925	LONE STAR APP CON 118.1 306.95	ALLIANCE TOWER 135.15 257.9	GND CON 132.65 306.2	CLNC DEL 128.725
------------------------	--	---------------------------------------	--------------------------------	----------------------------



ELEV 723	D	TDZE 723
----------	----------	----------



	ARGUE	WIGZU	LVLEE	OBLON
	3000	2400	2.5 NM to RW16L	△
		2400	*1.1 NM to RW16L	
		*1560		
		6 NM	2.6 NM	1.4 NM
			1.1 NM	
GP 3.00° TCH 55				
CATEGORY	A	B	C	D
LPV DA		923/18	200 (200-½)	
LNAV/VNAV DA		1016/24	293 (300-½)	
LNAV MDA	1120/24	397 (400-½)	1120/35	397 (400-¾)
C CIRCLING	1160-1 437 (500-1)	1320-1 597 (600-1)	1360-1¾ 637 (700-1¾)	1380-2 657 (700-2)

RNAV (GPS) RWY 16L

SC-2, 17 APR 2025 to 15 MAY 2025

SC-2, 17 APR 2025 to 15 MAY 2025