

NANDR THREE DEPARTURE (RNAV)

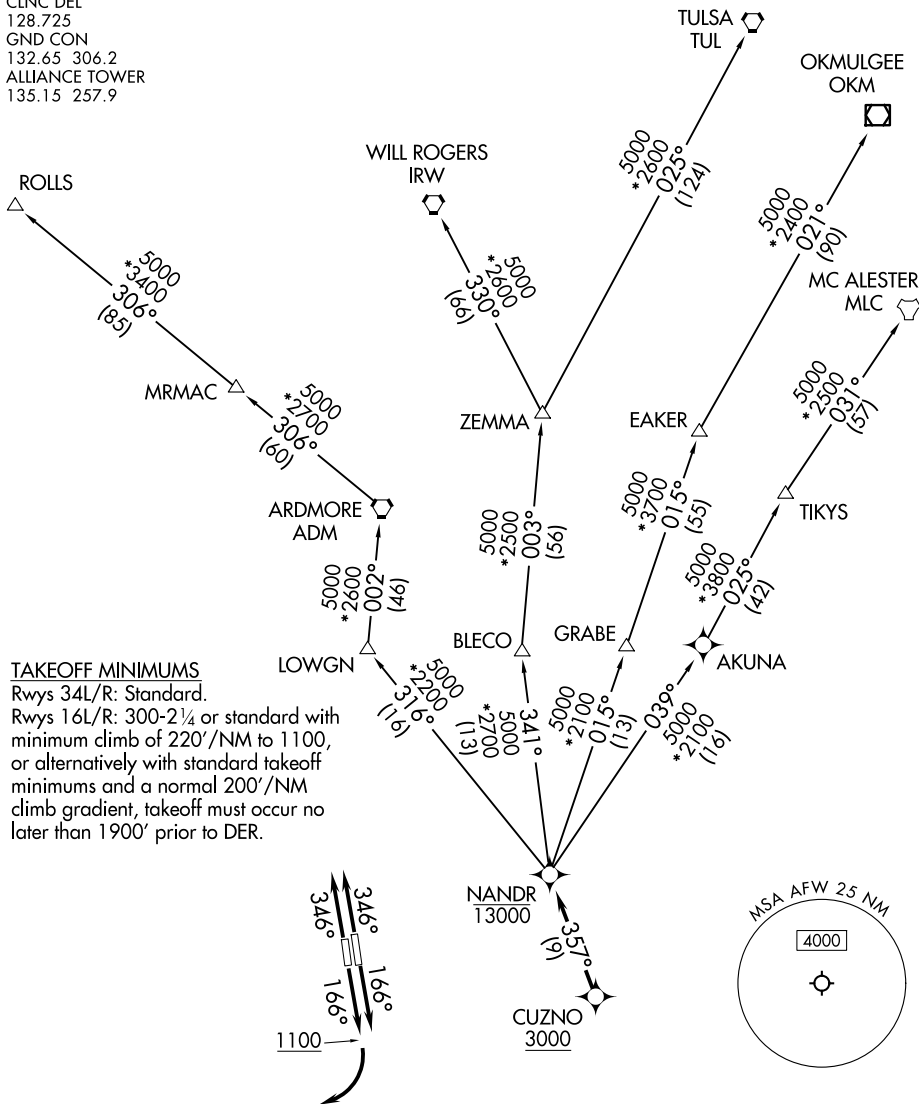
FORT WORTH, TEXAS

LONE STAR DEP CON
118.1 306.95
ATIS
126.925
CLNC DEL
128.725
GND CON
132.65 306.2
ALLIANCE TOWER
135.15 257.9

RNAV 1 - DME/DME/IRU or GPS.

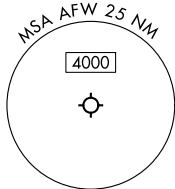
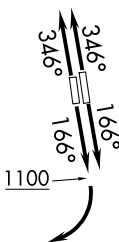
RADAR required.

**TOP ALTITUDE:
ASSIGNED BY ATC**



TAKEOFF MINIMUMS

Rwys 34L/R: Standard.
Rwys 16L/R: 300-2¼ or standard with minimum climb of 220'/NM to 1100, or alternatively with standard takeoff minimums and a normal 200'/NM climb gradient, takeoff must occur no later than 1900' prior to DER.



NOTE: EAKER Transition: For TUL terminal arrivals only.
NOTE: TULSA Transition: For all aircraft overflying TUL VORTAC.
NOTE: Aircraft arriving to the Oklahoma City terminal area, file and expect the ZEMMA enroute transition.

NOTE: Chart not to scale.

(CONTINUED ON FOLLOWING PAGE)

NANDR THREE DEPARTURE (RNAV)

(NANDR3.NANDR) 17APR25

FORT WORTH, TEXAS

PEROT FLD/FORT WORTH ALLIANCE (AFW)

SC-2, 17 APR 2025 to 15 MAY 2025

SC-2, 17 APR 2025 to 15 MAY 2025