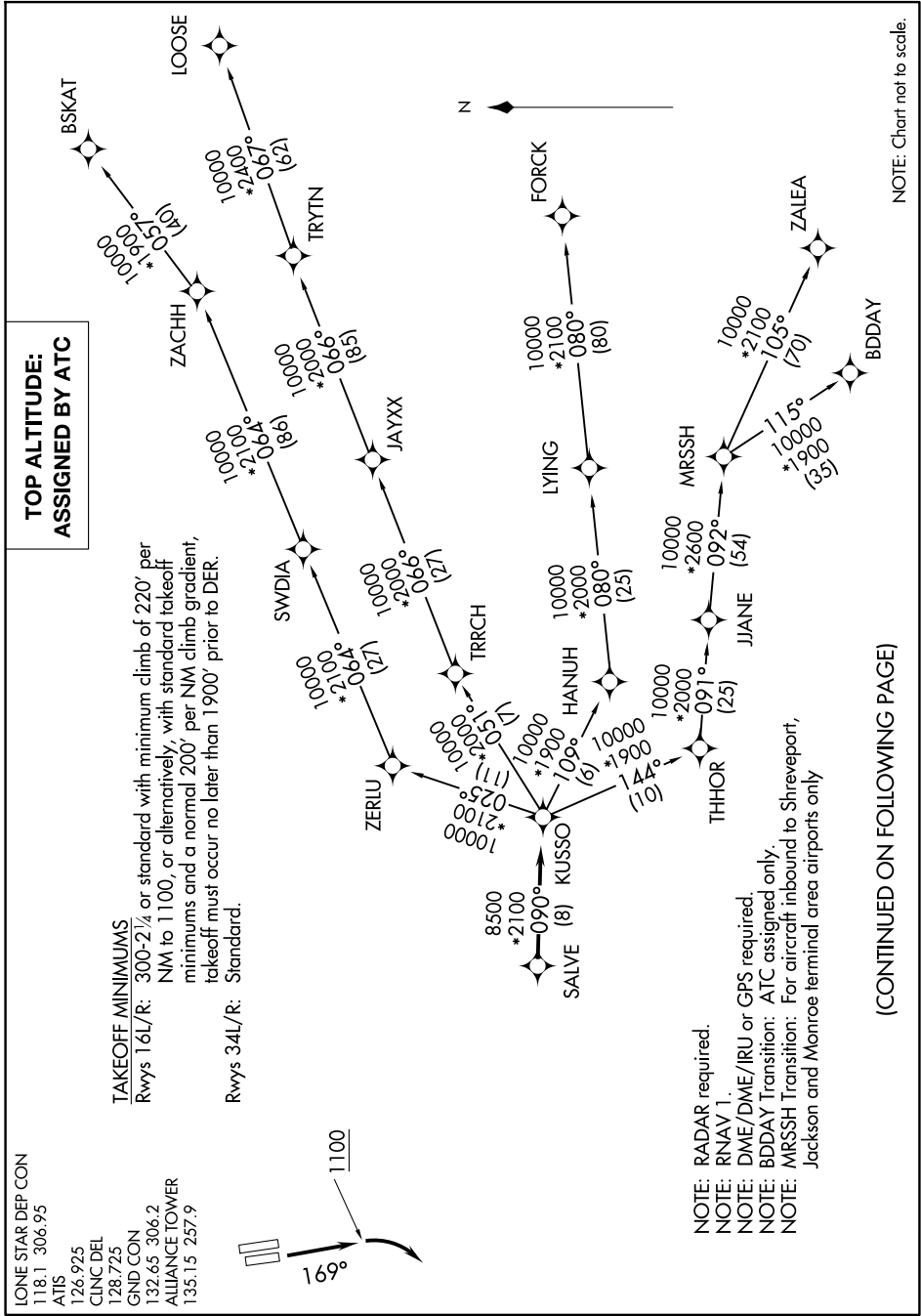


KUSSO ONE DEPARTURE (RNAV)

SC-2, 17 APR 2025 to 15 MAY 2025



LONE STAR DEP CON
 118.1 306.95
 ATIS
 126.925
 CLNC DEL
 128.725
 GND CON
 132.65 306.2
 ALLIANCE TOWER
 135.15 257.9

TAKEOFF MINIMUMS
 Rwy 34L/R: Standard.
 Rwy 16L/R: 300-2 $\frac{1}{4}$ or standard with minimum climb of 220' per NM to 1100, or alternatively, with standard takeoff minimums and a normal 200' per NM climb gradient, takeoff must occur no later than 1900' prior to DER.

NOTE: RADAR required.
 NOTE: RNAV 1.
 NOTE: DME/DME/IRU or GPS required.
 NOTE: BDDAY Transition: ATC assigned only.
 NOTE: MRSSH Transition: For aircraft inbound to Shreveport, Jackson and Monroe terminal area airports only

(CONTINUED ON FOLLOWING PAGE)

NOTE: Chart not to scale.

SC-2, 17 APR 2025 to 15 MAY 2025