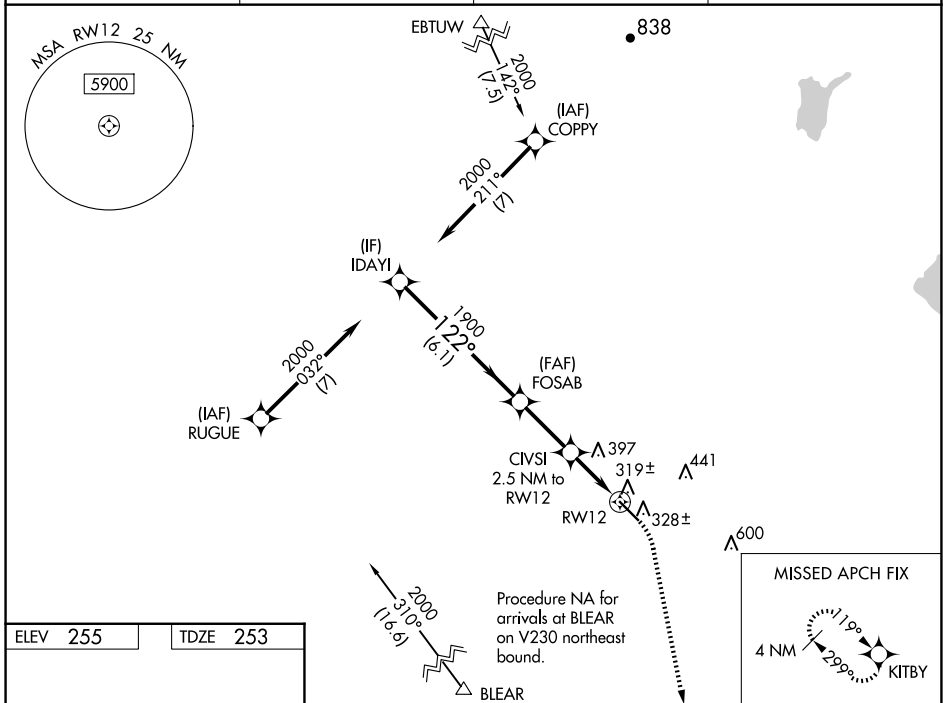


WAAS CH 62909 W12A	APP CRS 122°	Rwy Idg TDZE Apt Elev	5545 253 255
--	------------------------	-----------------------------	---

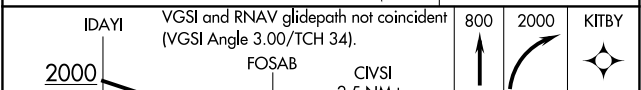
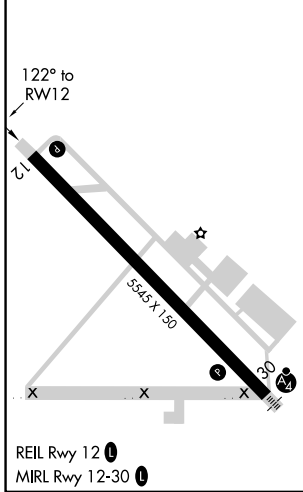
RNAV (GPS) RWY 12

MADERA MUNI (M.A.E)

RNP APCH - GPS.		MISSED APPROACH: Climb to 800 then climbing right turn to 2000 direct KITBY and hold.	
<p>⚠ For uncompensated Baro-VNAV systems, LNAV/VNAV NA below -2°C or above 54°C.</p>		ASOS 134.725	FRESNO APP CON 119.45
		CINC DEL 119.45	UNICOM 122.8 (CTAF) 📻



ELEV 255	TDZE 253
----------	----------



GP 3.00° TCH 35	6.1 NM	2.6 NM	1.5 NM	1.1 NM
--------------------	--------	--------	--------	--------

CATEGORY	A	B	C	D
LPV DA	503-3/4	250 (300-3/4)		NA
LNAV/VNAV DA	503-3/4	250 (300-3/4)		NA
LNAV MDA	620-1	367 (400-1)		NA
📻 CIRCLING	680-1 425 (500-1)	720-1 465 (500-1)	760-1 1/2 505 (600-1 1/2)	NA

SW-2, 17 APR 2025 to 15 MAY 2025

SW-2, 17 APR 2025 to 15 MAY 2025