

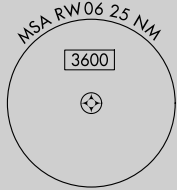
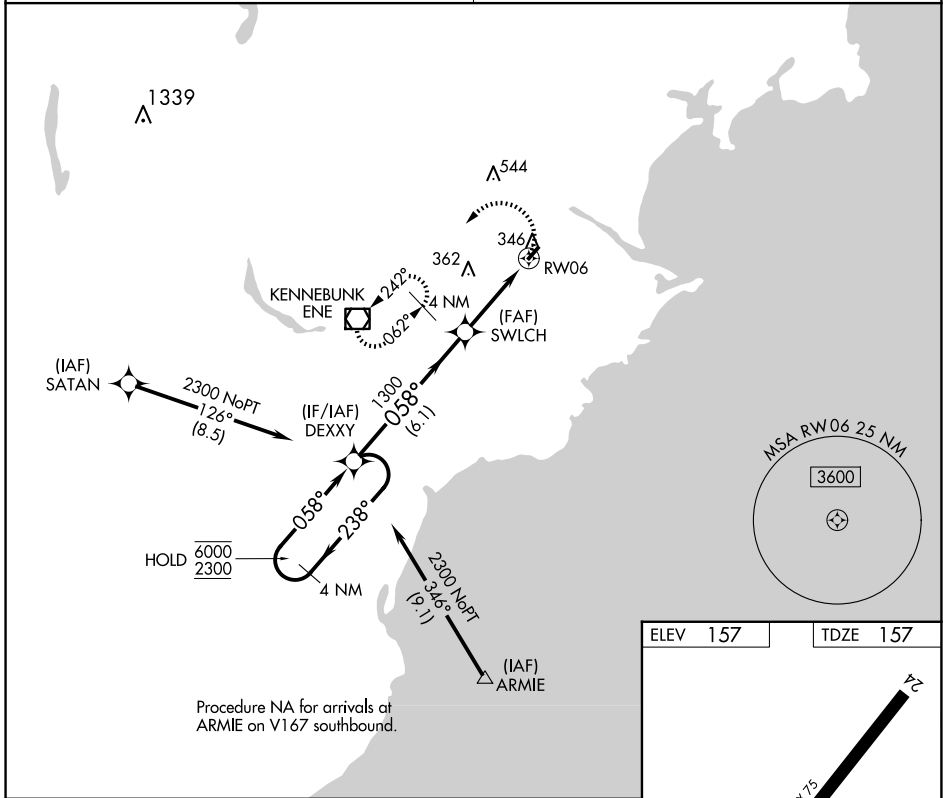
APP CRS	Rwy Idg	3000
058°	TDZE	157
	Apt Elev	157

RNAV (GPS) RWY 6

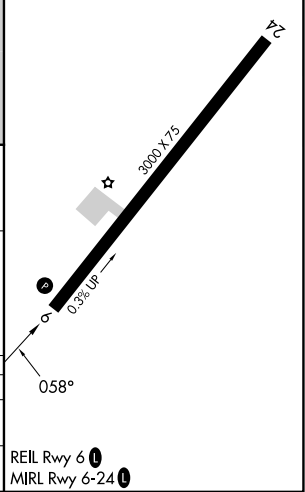
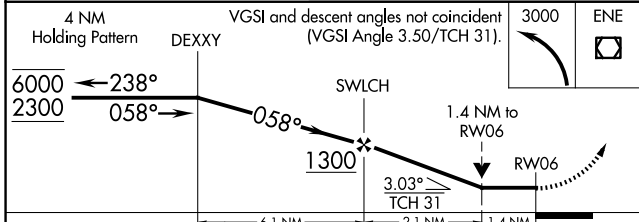
BIDDEFORD MUNI (B19)

RNP APCH.		MISSED APPROACH: Climbing left turn to 3000 direct ENE VOR/DME and hold, continue climb-in-hold to 3000.
<p>▽ Rwy 6 helicopter visibility reduction below 3/4 SM NA. Obtain local altimeter setting on CTAF; when not received use Sanford altimeter setting and increase all MDA 40 feet and LNAV visibility Cat C 1/8 SM, and Circling visibility Cat C 1/4 SM. VDP NA when using Sanford altimeter setting. Circling Rwy 24 NA at night.</p> <p>△ NA</p>		

<p>PORTLAND APP CON ★</p> <p>119.75 269.35</p>	<p>UNICOM</p> <p>123.0 (CTAF) 1</p>
---	--



ELEV 157	TDZE 157
----------	----------



CATEGORY	A	B	C	D
LNAV MDA	680-1	523 (600-1)	680-1½ 523 (600-1½)	NA
CIRCLING	780-1	623 (700-1)	800-1¾ 643 (700-1¾)	NA

NE-1, 17 APR 2025 to 15 MAY 2025

NE-1, 17 APR 2025 to 15 MAY 2025