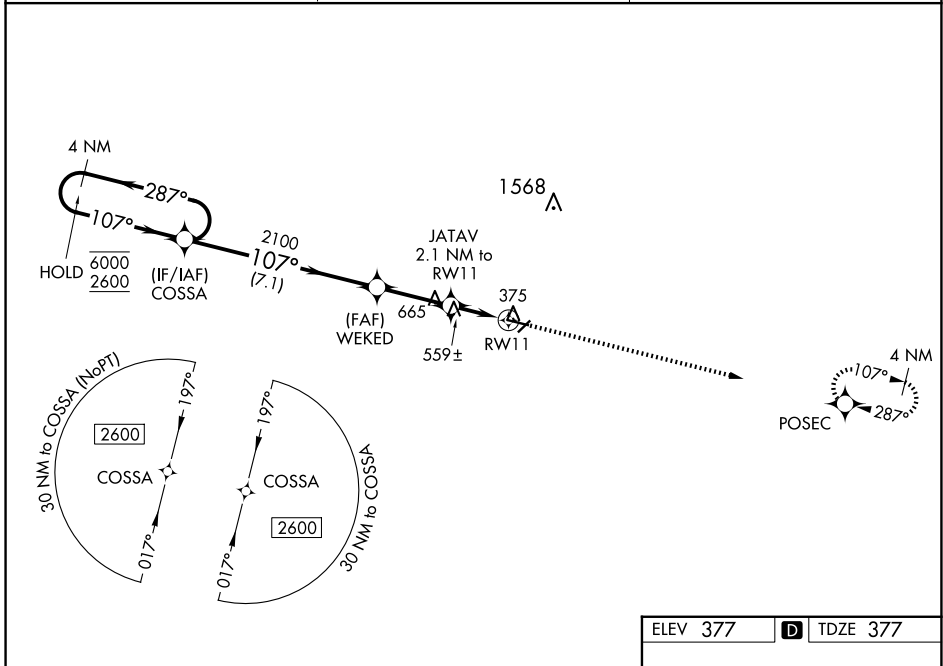


WAAS CH 82521 W11A	APP CRS 107°	Rwy ldg TDZE Apt Elev	4400 377 377
--	------------------------	-----------------------------	---

RNAV (GPS) RWY 11

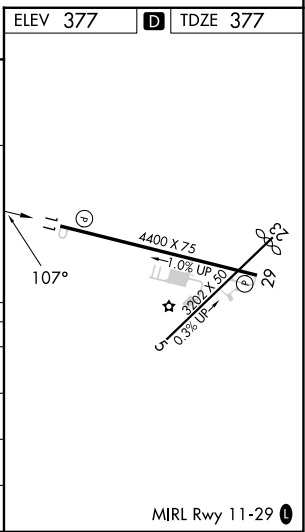
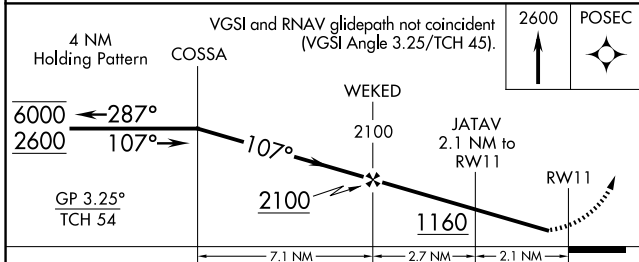
COCHRAN (48A)

RNP APCH - GPS.		<p>MISSED APPROACH: Climb to 2600 direct POSEC and hold.</p>
<p>⚠ Rwy 11 helicopter visibility reduction below 1 SM NA. For uncompensated Baro-VNAV systems, LNAV/VNAV NA below -15°C or above 54°C. Straight-in Rwy 11 NA at night, Circling Rwy 5, 11 and 23 NA at night.</p>		
AWOS-3PT 120.975	ATLANTA APP CON * 124.2 279.6	UNICOM 122.8 (CTAF) 0



SE-4, 17 APR 2025 to 15 MAY 2025

SE-4, 17 APR 2025 to 15 MAY 2025



CATEGORY	A	B	C	D
LPV DA		678-1	301 (400-1)	
LNAV/VNAV DA		690-1	313 (400-1)	
LNAV MDA	820-1 443 (500-1)		820-1 $\frac{3}{8}$ 443 (500-1 $\frac{3}{8}$)	
C CIRCLING	820-1 443 (500-1)	860-1 483 (500-1)	980-1 $\frac{3}{4}$ 603 (700-1 $\frac{3}{4}$)	980-2 603 (700-2)