

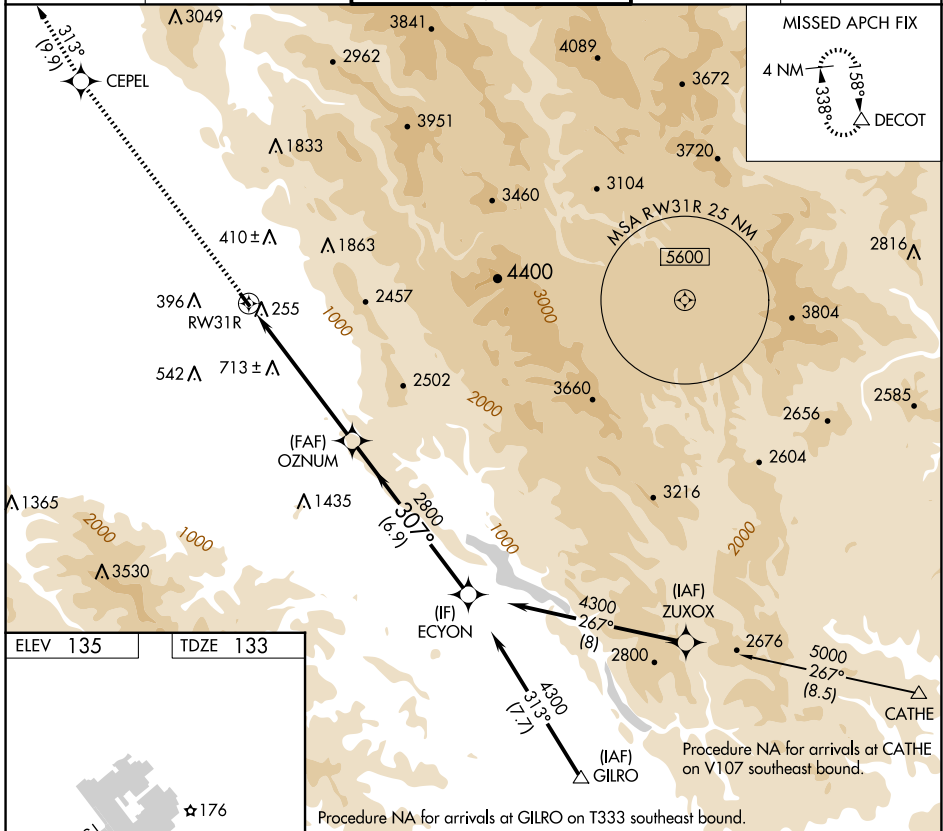
WAAS CH 58316 W31A	APP CRS 307°	Rwy Idg TDZE 133 Apt Elev 135	2690
--	------------------------	---	-------------

RNAV (GPS) Z RWY 31R

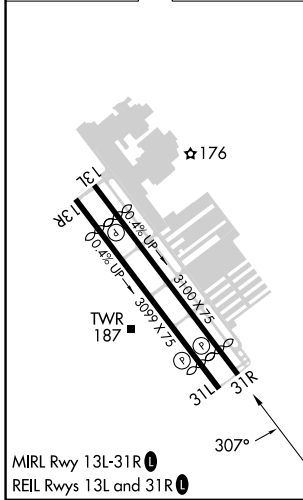
REID-HILLVIEW OF SANTA CLARA COUNTY (R.H.V)

RNP APCH.	When control tower closed, use Norman Y Mineta San Jose Intl altimeter setting and increase DA to 558 feet and visibility to 1¼ SM. Rwy 31R helicopter visibility reduction below ¾ SM NA.	MISSED APPROACH: Climb to 4000 direct CEPEL and on track 313° to DECOT and hold.
-----------	--	--

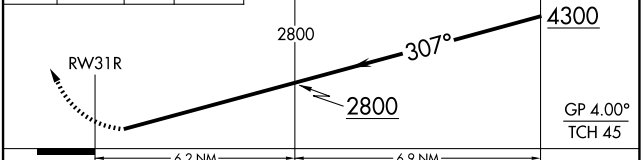
ATIS 125.2	NORCAL APP CON 120.1 290.25	REID-HILLVIEW TOWER* (Rwy 13L-31R) (Rwy 13R-31L) 119.8 (CTAF) 0 126.1	GND CON 121.65	UNICOM 122.95
----------------------	---------------------------------------	--	--------------------------	-------------------------



ELEV 135	TDZE 133
----------	----------



4000	CEPEL	tr 313°	DECOT	ECYON
------	-------	---------	-------	-------



CATEGORY	A	B	C	D
LPV DA	533-1¼	400 (400-1¼)	NA	

SW-2, 17 APR 2025 to 15 MAY 2025

SW-2, 17 APR 2025 to 15 MAY 2025