

WAAS CH <b>63217</b> <b>W32A</b>	APP CRS <b>315°</b>	Rwy Idg <b>4800</b> TDZE <b>356</b> Apt Elev <b>358</b>
--	------------------------	---

# RNAV (GPS) RWY 32

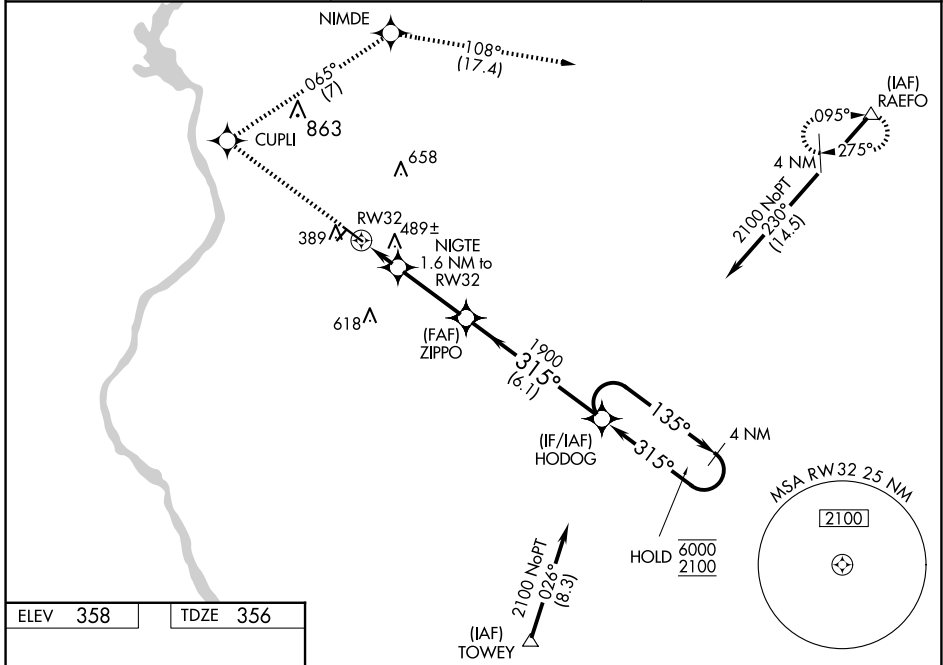
RICHMOND COUNTY (R/CZ)

RNP APCH - GPS.

**⚠** Circling NA to Rwy 4 and 22. Procedure NA at night. Rwy 32 helicopter visibility reduction below 1 NA. Baro-VNAV NA when using Mackall altimeter setting. For uncompensated Baro-VNAV systems, LNAV/VNAV NA below -1.5°C or above 54°C. When local altimeter setting not received, use Mackall altimeter setting: increase LPV DA to 679 feet; LNAV/VNAV DA to 833 feet and all visibilities ½ SM; increase all MDAs 40 feet and LNAV visibility Cat C/D ½ SM.

MISSED APPROACH: Climb to 2400 direct CUPLI and right turn on track 065° to NIMDE and on track 108° to RAEFO and hold.

AWOS-3 <b>118.775</b>	FAYETTEVILLE APP CON <b>127.8 343.725</b>	UNICOM <b>122.8 (CTAF)</b>
--------------------------	--	-------------------------------



ELEV 358	TDZE 356
----------	----------

	2400	CUPLI	NIMDE	RAEFO	4 NM Holding Pattern																									
		↑	tr 065°	tr 108°	HODOG																									
		NIGTE 1.6 NM to RW32	ZIPPO 1900																											
		900	1900	6000	GP 3.00°																									
		1.6 NM	3 NM	6.1 NM	TCH 40																									
REIL Rwy 32 MIRL Rwy 14-32	<table border="1"> <thead> <tr> <th>CATEGORY</th> <th>A</th> <th>B</th> <th>C</th> <th>D</th> </tr> </thead> <tbody> <tr> <td>LPV DA</td> <td></td> <td>640-1</td> <td>284 (300-1)</td> <td></td> </tr> <tr> <td>LNAV/VNAV DA</td> <td></td> <td>794-1¼</td> <td>438 (500-1¼)</td> <td></td> </tr> <tr> <td>LNAV MDA</td> <td>740-1</td> <td>384 (400-1)</td> <td>740-1⅛</td> <td>384 (400-1⅛)</td> </tr> <tr> <td>CIRCLING</td> <td>800-1 442 (500-1)</td> <td>820-1 462 (500-1)</td> <td>960-1¾ 602 (700-1¾)</td> <td>960-2 602 (700-2)</td> </tr> </tbody> </table>					CATEGORY	A	B	C	D	LPV DA		640-1	284 (300-1)		LNAV/VNAV DA		794-1¼	438 (500-1¼)		LNAV MDA	740-1	384 (400-1)	740-1⅛	384 (400-1⅛)	CIRCLING	800-1 442 (500-1)	820-1 462 (500-1)	960-1¾ 602 (700-1¾)	960-2 602 (700-2)
CATEGORY	A	B	C	D																										
LPV DA		640-1	284 (300-1)																											
LNAV/VNAV DA		794-1¼	438 (500-1¼)																											
LNAV MDA	740-1	384 (400-1)	740-1⅛	384 (400-1⅛)																										
CIRCLING	800-1 442 (500-1)	820-1 462 (500-1)	960-1¾ 602 (700-1¾)	960-2 602 (700-2)																										

SE-2, 17 APR 2025 to 15 MAY 2025

SE-2, 17 APR 2025 to 15 MAY 2025