

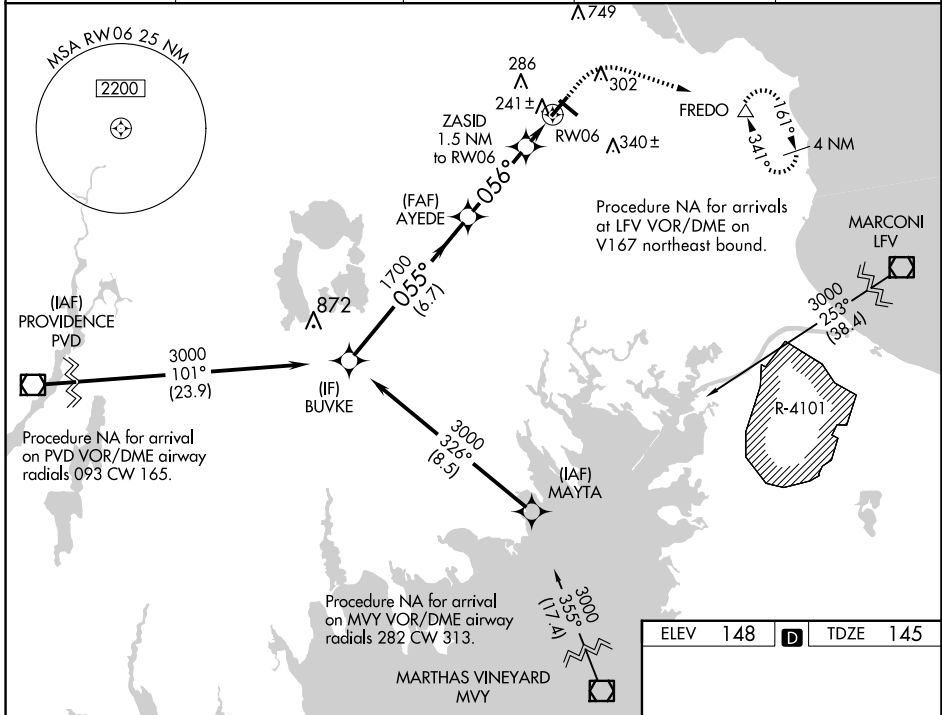
WAAS CH 40422 W06A	APP CRS 056°	Rwy Idg 4650 TDZE 145 Apt Elev 148
--	------------------------	---

RNAV (GPS) RWY 6

PLYMOUTH MUNI (PYM)

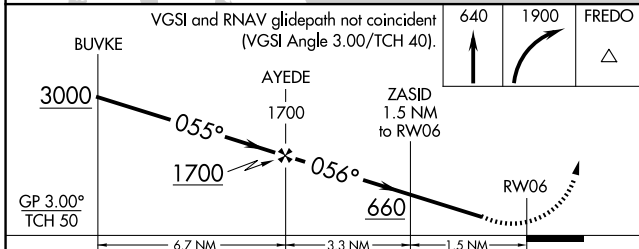
RNP APCH - GPS.	MALSF	MISSED APPROACH: Climb to 640 then climbing right turn to 1900 direct FREDO and hold.
<p>▼ Circling Rwy 15 NA at night. Rwy 6 helicopter visibility reduction below 3/4 SM NA.</p> <p>▲ For uncompensated Baro-VNAV systems, LNAV/VNAV NA below -17°C or above 54°C.</p> <p>For inop ALS, increase LPV all Cats visibility to 3/8 SM and LNAV/VNAV all Cats visibility to 1/2 SM.</p>		

ASOS 135.625	BOSTON APP CON 118.2 284.6	CLNC DEL 127.75	UNICOM 122.725 (CTAF)	122.9
------------------------	--------------------------------------	---------------------------	---------------------------------	--------------

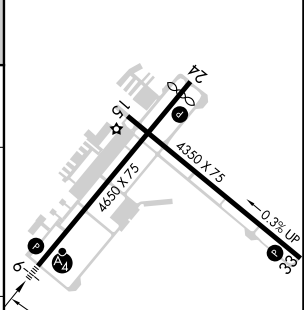


NE-1, 17 APR 2025 to 15 MAY 2025

NE-1, 17 APR 2025 to 15 MAY 2025



ELEV 148	D	TDZE 145
----------	----------	----------



	A	B	C	D
LPV DA	436-3/4	291 (300-3/4)		NA
LNAV/VNAV DA	426-3/4	281 (300-3/4)		NA
LNAV MDA	500-3/4	355 (400-3/4)		NA
C CIRCLING	620-1 472 (500-1)	640-1 492 (500-1)	760-1 3/4 612 (700-1 3/4)	NA