

VORTAC IRQ 113.9 Chan 86	APP CRS 102°	Rwy Idg TDZE Apt Elev	N/A N/A 529
----------------------------------------------	------------------------	-----------------------------	----------------------------------------

VOR/DME-A

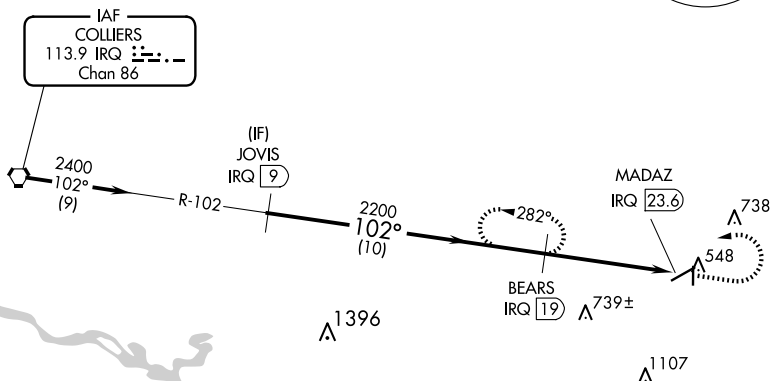
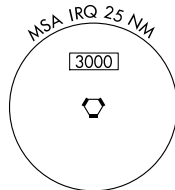
AIKEN RGNL (AIK)

NA When local altimeter setting not received, use Augusta Rgnl at Bush Fld altimeter setting and increase all MDAs 120 feet and increase Cat C visibility ¼ SM.

MISSED APPROACH: Climb to 1600 then climbing left turn to 2400 on IRQ VORTAC R-102 to BEARS/IRQ 19 DME and hold.

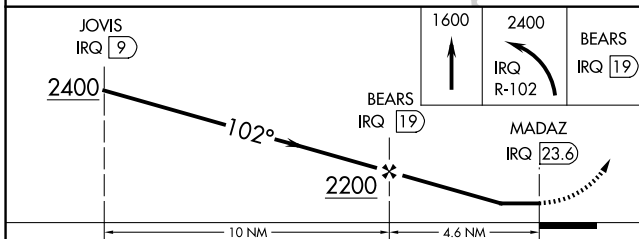
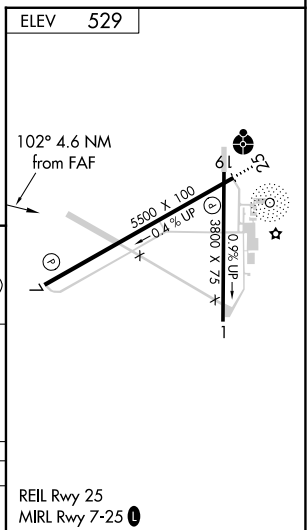
AWOS-3 118.025	AUGUSTA APP CON * 119.15 284.625	CLNC DEL 126.075	UNICOM 122.8 (CTAF) 0
--------------------------	--------------------------------------------	----------------------------	----------------------------------------

Procedure NA for arrivals at IRQ VORTAC on airway radials 062 CW 154.



SE-2, 17 APR 2025 to 15 MAY 2025

SE-2, 17 APR 2025 to 15 MAY 2025



CATEGORY	A	B	C	D
CIRCLING	980-1 451 (500-1)	1000-1¼ 471 (500-1¼)	1140-1¾ 611 (700-1¾)	1420-3 891 (900-3)

REIL Rwy 25
MIRL Rwy 7-25 **0**