

NDB AIK	APP CRS	Rwy Idg	5500
<b>347</b>	<b>225°</b>	TDZE	515
		Apt Elev	529

# NDB RWY 25

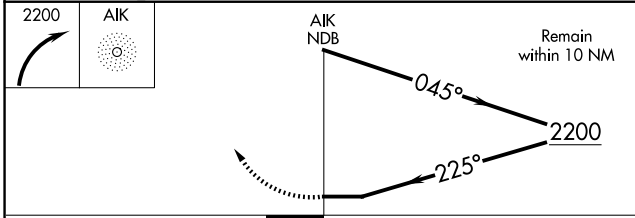
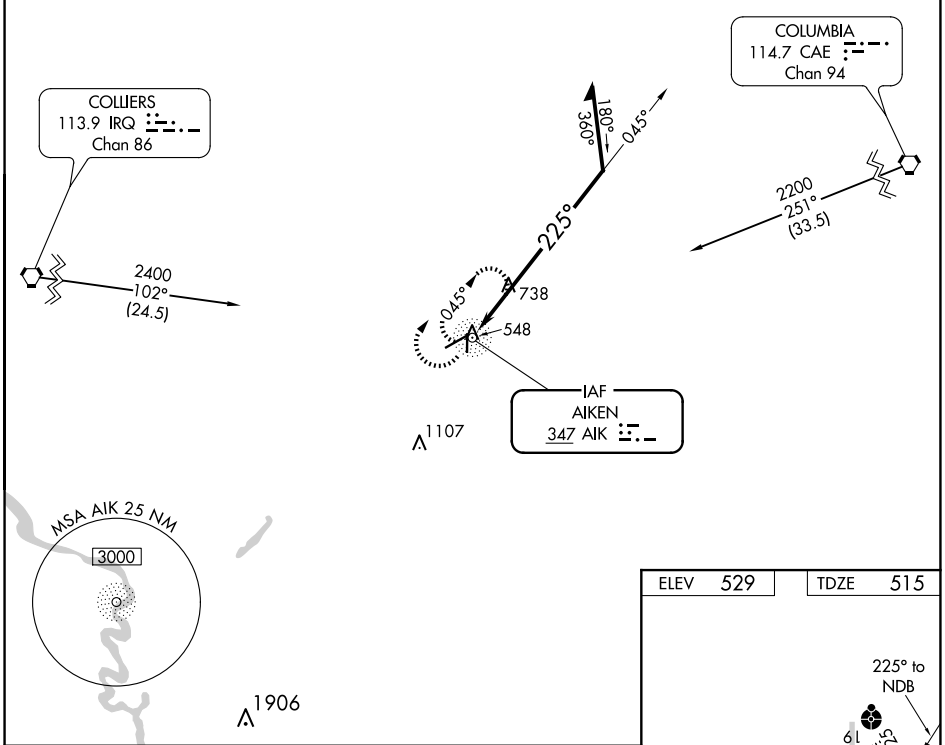
AIKEN RGNL (AIK)

**NA** When local altimeter setting not received, use Augusta Rgnl at Bush Fld altimeter setting and increase all MDAs 120 feet; increase S-25 Cats B/C/D and Circling Cat C visibility  $\frac{1}{4}$  SM. For inop ODALS, increase S-25 Cat C/D visibility to  $1\frac{1}{8}$  mile. For inop ODALS when using Augusta Rgnl at Bush Fld altimeter setting, increase S-25 Cat C/D visibility to  $2\frac{1}{2}$  mile. Helicopter visibility reduction below  $\frac{3}{4}$  SM NA.

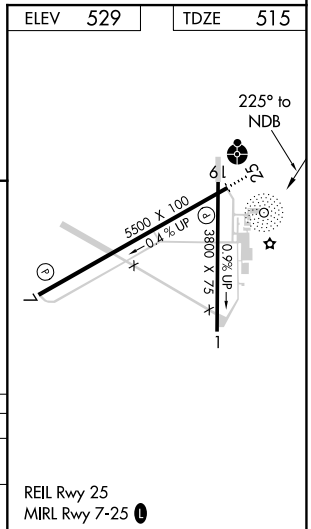
**ODALS**

**MISSED APPROACH:** Climbing right turn to 2200 in AIK NDB holding pattern.

AWOS-3 <b>118.025</b>	AUGUSTA APP CON ★ <b>119.15 284.625</b>	CLNC DEL <b>126.075</b>	UNICOM <b>122.8 (CTAF) 0</b>
--------------------------	--	----------------------------	---------------------------------



CATEGORY	A	B	C	D
S-25	1180- $\frac{3}{4}$	665 (700- $\frac{3}{4}$ )	1180- $1\frac{3}{4}$	665 (700- $1\frac{3}{4}$ )
CIRCLING	1180-1	651 (700-1)	1180- $1\frac{3}{4}$ 651 (700- $1\frac{3}{4}$ )	1420-3 891 (900-3)



SE-2, 17 APR 2025 to 15 MAY 2025

SE-2, 17 APR 2025 to 15 MAY 2025