

WAAS CH 78029 W18A	APP CRS 185°	Rwy Idg TDZE 777 Apt Elev 777	5264
--	------------------------	---	-------------

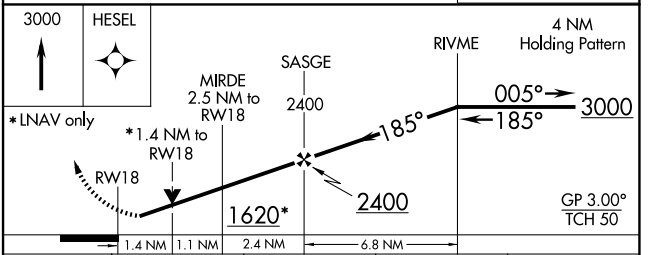
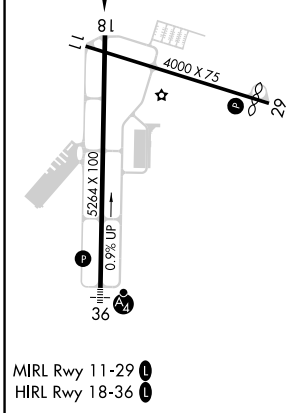
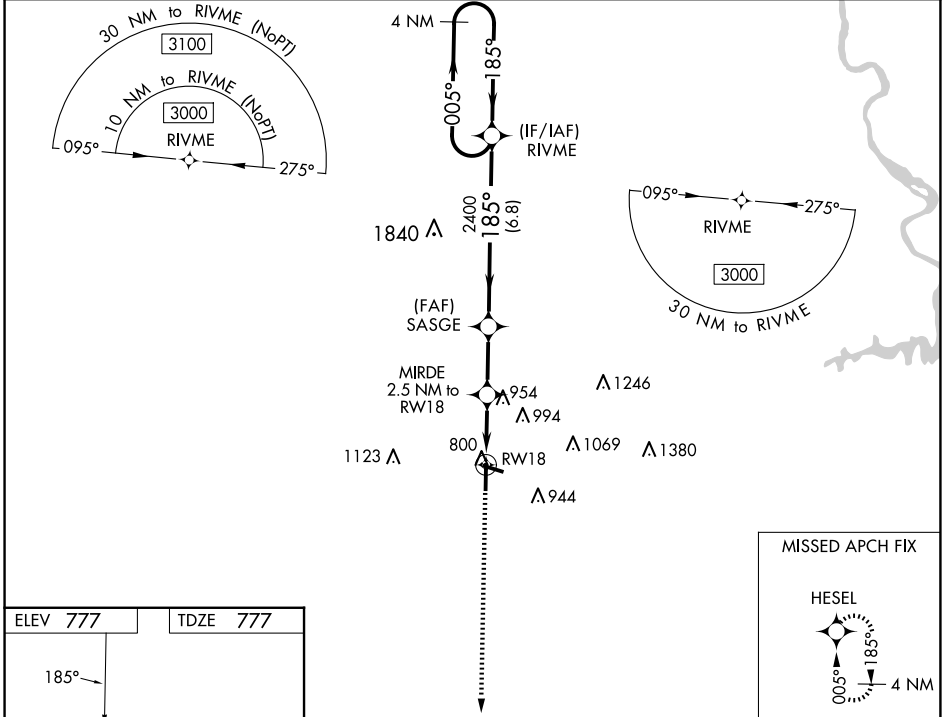
RNAV (GPS) RWY 18

AUBURN UNIVERSITY RGNL (AUO)

▼ For uncompensated Baro-VNAV systems, LNAV/VNAV NA below -16°C (4°F) or above 54°C (130°F).
 ▲ Baro-VNAV and VDP NA when using Columbus altimeter setting. DME/DME RNP-0.3 NA. Rwy 18 helicopter visibility reduction below ¾ SM not authorized. When local altimeter setting not received, use Columbus altimeter setting: increase LPV DA to 1140 feet and visibility all Cats ½ SM; increase LNAV/VNAV DA to 1164 feet and visibility all Cats ¾ SM; increase all MDA 120 feet and LNAV Cats C/D visibility ¾ SM, Circling Cat C visibility ¼ SM, and circling Cat D visibility ½ SM.

MISSED APPROACH: Climb to 3000 direct HESEL and hold.

AWOS-3PT 132.575	ATLANTA APP CON * 125.5 323.1	AUBURN TOWER * 123.875	GND CON 121.625	CLNC DEL 118.7 (When twr closed)	UNICOM 123.0 (CTAF) 0
----------------------------	---	----------------------------------	---------------------------	---	--



CATEGORY	A	B	C	D
LPV DA		1027-¾	250 (300-¾)	
LNAV/VNAV DA		1051-⅞	274 (300-⅞)	
LNAV MDA	1260-1	483 (500-1)	1260-1⅓	483 (500-1⅓)
CIRCLING	1280-1	1360-1	1380-1¾	1480-2¼
	503 (600-1)	583 (600-1)	603 (700-1¾)	703 (800-2¼)