

WAAS CH 63139 W11A	APP CRS 111°	Rwy Idg TDZE Apt Elev	4000 775 777
--	------------------------	-----------------------------	---

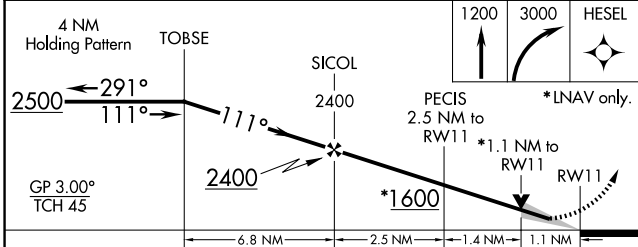
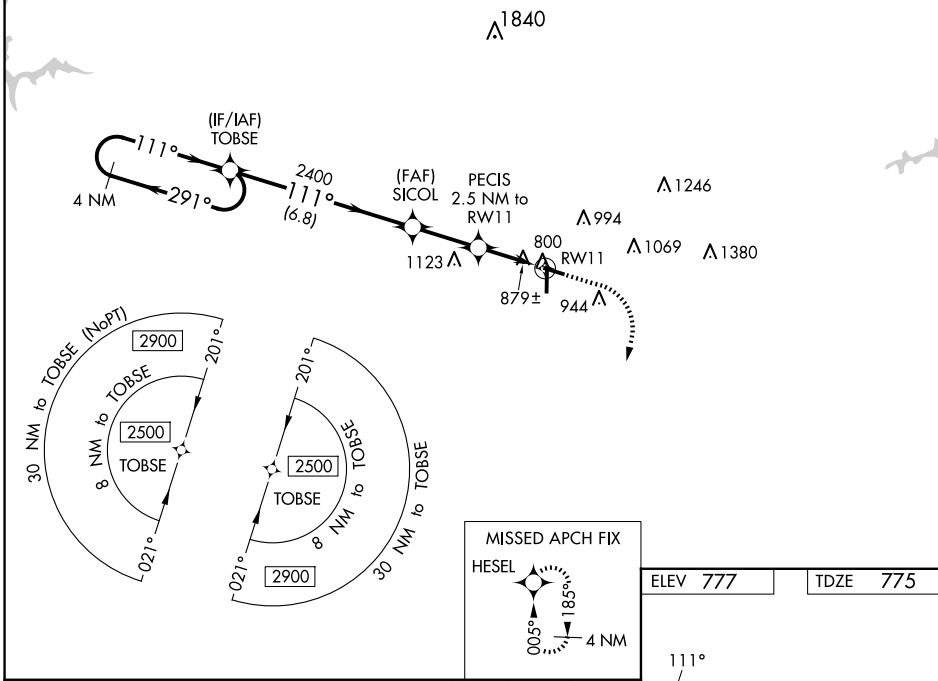
RNAV (GPS) RWY 11

AUBURN UNIVERSITY RGNL (AUO)

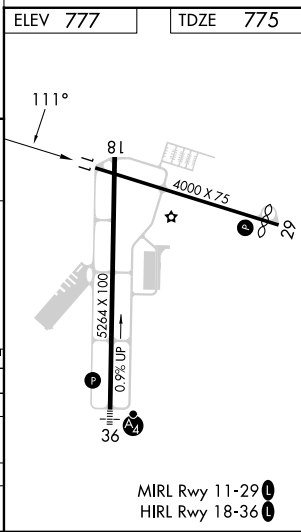
⚠ For uncompensated Baro-VNAV systems, LNAV/VNAV NA below -16°C (4°F) or above 54°C (130°F). Baro-VNAV and VDP NA when using Columbus altimeter setting.
⚠ DME/DME RNP-0.3 NA. When local altimeter setting not received, use Columbus altimeter setting: increase LPV DA to 1138 feet and visibility all Cats ¼ SM; increase LNAV/VNAV DA to 1173 feet and visibility all Cats ⅜ SM; increase all MDA 120 feet and LNAV Cats C/D and Circling Cat C visibility ½ SM and Circling Cat D visibility ⅜ SM.

MISSED APPROACH:
 Climb to 1200 then climbing right turn to 3000 direct HESEL and hold.

AWOS-3PT 132.575	ATLANTA APP CON ★ 125.5 323.1	AUBURN TOWER ★ 123.875	GND CON 121.625	CLNC DEL 118.7 (When twr closed)	UNICOM 123.0 (CTAF) 0
----------------------------	---	----------------------------------	---------------------------	---	--



CATEGORY	A	B	C	D
LPV DA		1025-1	250 (300-1)	
LNAV/VNAV DA		1060-1	285 (300-1)	
LNAV MDA	1160-1	385 (400-1)	1160-1½	385 (400-1½)
CIRCLING	1280-1 503 (600-1)	1360-1 583 (600-1)	1380-1¾ 603 (700-1¾)	1480-2¼ 703 (800-2¼)



SE-4, 17 APR 2025 to 15 MAY 2025

SE-4, 17 APR 2025 to 15 MAY 2025

MIRL Rwy 11-29 **0**
 HIRL Rwy 18-36 **0**