

WAAS CH <b>97730</b> <b>W14A</b>	APP CRS <b>139°</b>	Rwy Idg TDZE Apt Elev	<b>5650</b> <b>200</b> <b>200</b>
--	------------------------	-----------------------------	---

# RNAV (GPS) RWY 14

BOIRE FLD (ASH)

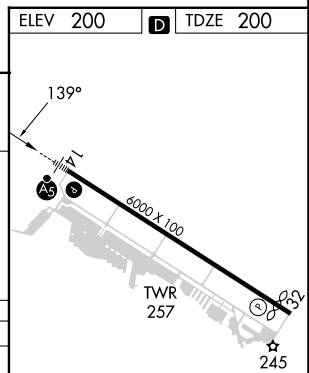
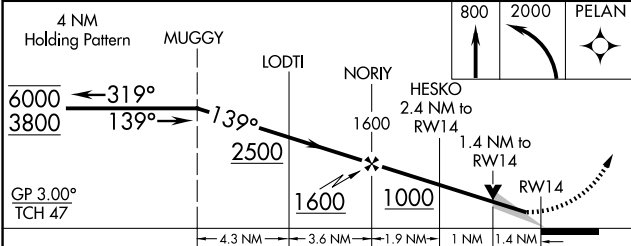
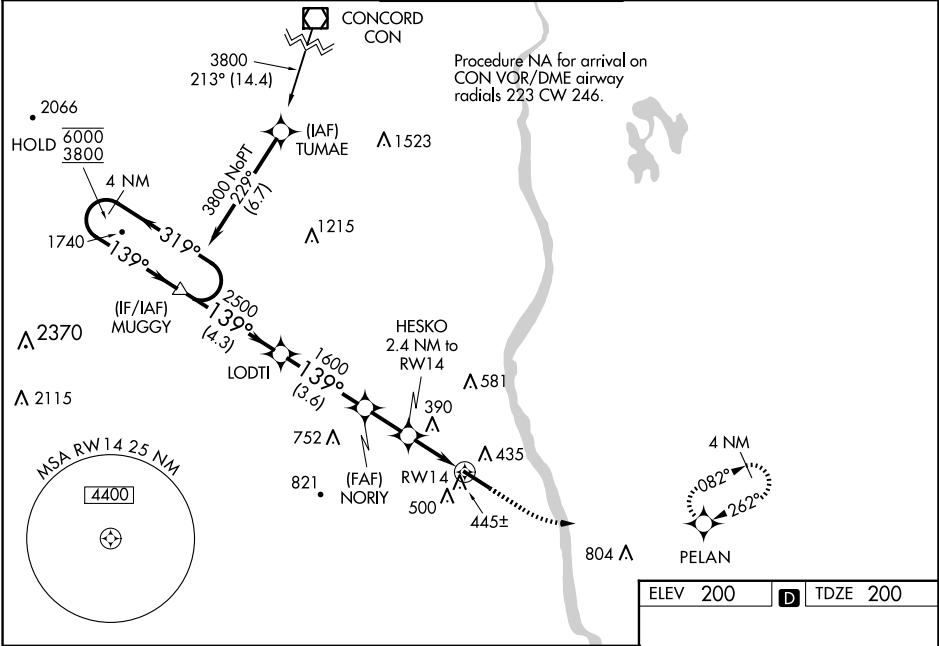
RNP APCH - GPS.

**⚠** For uncompensated Baro-VNAV systems, LNAV/VNAV NA below -15°C or above 54°C. For inop ALS, increase LNAV/VNAV all Cats visibility to 1½ SM and LNAV Cat C/D visibility to 1¾ SM.

MALSR

**MISSED APPROACH:**  
Climb to 800 then climbing left turn to 2000 direct PELAN and hold.

ATIS <b>125.1</b>	BOSTON APP CON <b>124.9 269.075</b>	<b>NASHUA TOWER *</b> <b>133.2 (CTAF)</b>	GND CON <b>121.8</b>	CLNC DEL <b>121.8</b>
----------------------	--	--	-------------------------	--------------------------



CATEGORY	A	B	C	D
LPV DA		400-½	200 (200-½)	
LNAV/VNAV DA		614-¾	414 (500-¾)	
LNAV MDA	700-½	500 (500-½)	700-1	500 (500-1)
<b>C</b> CIRCLING	840-1 640 (700-1)	860-1 660 (700-1)	920-2 720 (800-2)	980-2½ 780 (800-2½)

HIRL Rwy 14-32

REIL Rwy 32

NE-1, 17 APR 2025 to 15 MAY 2025

NE-1, 17 APR 2025 to 15 MAY 2025