

# RNAV (GPS) RWY 35

APCH CRS	Rwy Idg	4200
348°	TDZE	1476
	Arprt Elev	1565

[USAF]

SPARREVOHN LRRS (PASV)

RNP APCH - GPS	MISSED APPROACH: Climbing right turn to 5500 direct LIVME and hold.
----------------	---

ANCHORAGE CENTER 134.3 351.8	KENAI RCO 122.5	UNICOM 126.2 (CTAF)	AWOS-3
---------------------------------	--------------------	------------------------	--------

Visibility reduction by helicopters not authorized.

Uncontrolled airspace below 700 AGL within 3 NM of Sparrevohn Airport.

Procedure NA when MOA 1782 (NAKNEK 2 MOA) is active unless coordination with Anchorage Center is completed.

CAUTION: Rwy surrounded by mountains. Rwy located on slope of 3236' mountain. Approach from S only, land Rwy 35 only.

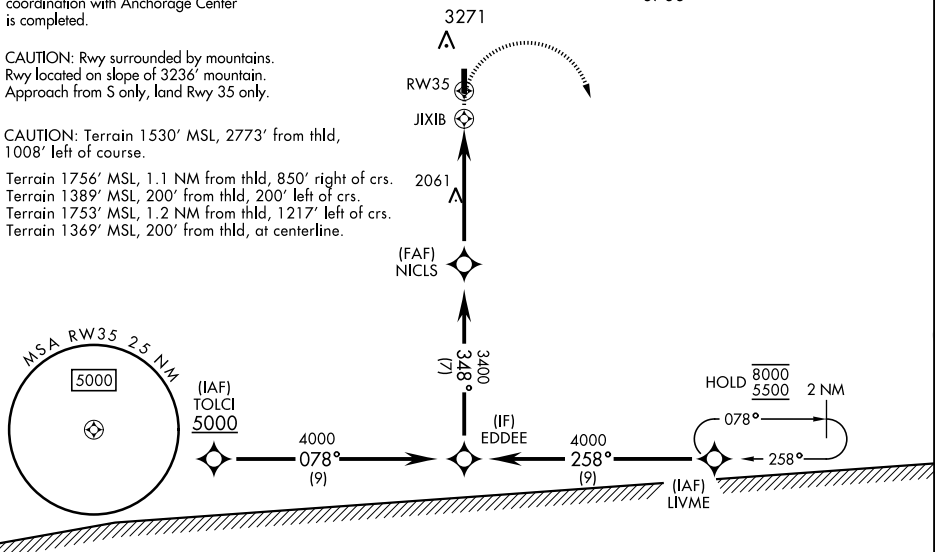
CAUTION: Terrain 1530' MSL, 2773' from thld, 1008' left of course.

Terrain 1756' MSL, 1.1 NM from thld, 850' right of crs.  
 Terrain 1389' MSL, 200' from thld, 200' left of crs.  
 Terrain 1753' MSL, 1.2 NM from thld, 1217' left of crs.  
 Terrain 1369' MSL, 200' from thld, at centerline.

## MILITARY CERTIFIED AIRCEW OR AUTHORIZED CONTRACT AIRCRAFT ONLY

### NOT FOR CIVIL USE

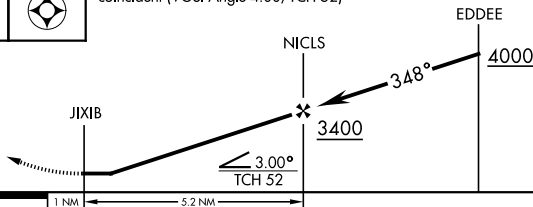
3783



MOA 1782 (NAKNEK 2 MOA)

EMERG SAFE ALT 100 NM 13,700

5500	LIVME	VGSI and descent angle not coincident (VGSI Angle 4.00/TCH 52)
------	-------	--



ELEV	1565	TDZE	1476
Land Rwy 35 Takeoff Rwy 17			
REIL Rwy 35 ↑ 348°			

CATEGORY	A	B	C	D
RNAV MDA	3220-1¼ 1744 (1700-1¼)	3380-1½ 1904 (1900-1½)	3460-3 1984 (1900-3)	NOT AUTHORIZED
CIRCLING	NOT AUTHORIZED			

# RNAV (GPS) RWY 35

AK, 17 APR 2025 to 12 JUN 2025

AK, 17 APR 2025 to 12 JUN 2025