

# NDB RWY 35

NDB CRN <b>281</b>	APCH CRS <b>357°</b>	Rwy ldg TDZE 1476 Arprt Elev 1565
-----------------------	-------------------------	--

[USAF]

SPARREVOHN LRRS (PASV)

<p>▼ Night operations not authorized. Visibility reduction by helicopters NA.</p>		<p>MISSED APPROACH: Climb to 4200, then climbing right turn to 5600 direct CRN and hold. Continue climb in hold to 5600.</p>	
ANCHORAGE CENTER <b>134.3 351.8</b>	KENAI RCO <b>122.5</b>	SPARREVOHN RADIO <b>126.2</b> (CTAF)	AWOS-3

CAUTION: Rwy surrounded by mountains. Rwy located on slope of 3236' mountain. Approach from S only, land Rwy 35 only.

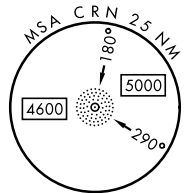
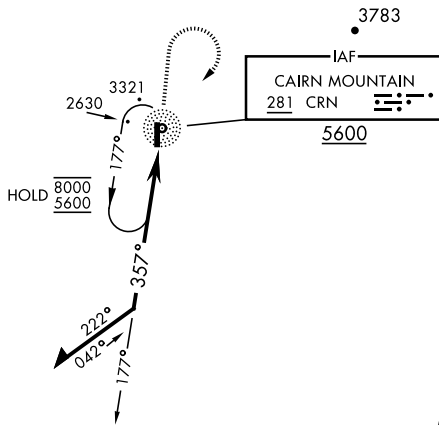
CAUTION: Terrain 1530' MSL, 2773' from thld, 1008' left of course.

Successful go-around improbable if initiated past the MAP.

Uncontrolled Airspace below 700' AGL within 3 NM of Sparrevohn airport.

## MILITARY CERTIFIED AIRCREWS OR AUTHORIZED CONTRACT AIRCRAFT ONLY

### NOT FOR CIVIL USE



EMERG SAFE ALT 100 NM 13,700

Remain within 10 NM	CRN NDB <b>5600</b>		4200	5600	CRN	ELEV 1565	TDZE 1476
	<p>4400</p> <p>177°</p> <p>357°</p>		<p>↑</p> <p>↪</p>			<p>4.8% UP</p> <p>4200 x 130</p> <p>Land Rwy 35 Tkof Rwy 17</p>	<p>REIL Rwy 35</p> <p>35</p> <p>357°</p>
CATEGORY	A	B	C	D			
S-35	3580-1¼ 2104 (2100-1¼)	3580-1½ 2104 (2100-1½)	3580-3 2104 (2100-3)	NOT AUTHORIZED			
CIRCLING	NOT AUTHORIZED						

# NDB RWY 35

AK, 17 APR 2025 to 12 JUN 2025

AK, 17 APR 2025 to 12 JUN 2025